

For Research Use Only



# Mouse S100A8 Recombinant Matched Antibody Pair, PBS Only

Catalog Number:MP02237-1

## Capture Antibody Information

Catalog Number:  
85972-2-PBS

Host:  
Rabbit

Isotype:  
IgG

Purification Method:  
Protein A purification

Clone ID:  
250113D6

Reactivity:  
mouse

Immunogen Catalog Number:  
Eg2959

Conjugate:  
Unconjugated

Full name:  
S100 calcium binding protein A8  
(calgranulin A)

Gene ID:  
20201

## Detection Antibody Information

Catalog Number:  
85972-1-PBS

Host:  
Rabbit

Isotype:  
IgG

Purification Method:  
Protein A purification

Clone ID:  
250113B2

Reactivity:  
mouse

GenBank:  
NM\_013650.2

Immunogen Catalog Number:  
Eg2959

Conjugate:  
Unconjugated

Full name:  
S100 calcium binding protein A8  
(calgranulin A)

Gene ID:  
20201

## Applications

Tested Applications:  
Cytometric bead array

Range:  
1.563-100 ng/mL (Cytometric Bead Array)

Recommended Dilutions:  
It is recommended that this reagent should be titrated in each testing system to obtain optimal results.

## Product Information

MP02237-1 targets S100A8 in immunoassays as a matched antibody pair. Validated in Cytometric bead array.

Capture antibody: Mouse S100a8 Recombinant antibody, PBS Only (Capture) 85972-2-PBS (250113D6). 100 µg. Concentration 1 mg/mL.

Detection antibody: Mouse S100a8 Recombinant antibody, PBS Only (Detector) 85972-1-PBS (250113B2). 100 µg. Concentration 1 mg/mL.

Unconjugated rabbit recombinant monoclonal antibody pair in PBS only storage buffer at a concentration of 1 mg/mL, ready for conjugation. Created using Proteintech's proprietary in-house recombinant technology. Recombinant production enables unrivalled batch-to-batch consistency, easy scale-up, and future security of supply.

Matched antibody pairs are designed for use in a variety of assays and platforms that require matched antibody pairs.

Antibody use should be optimized for each application and assay.

## Storage

Storage:  
Store at -80°C.  
Storage buffer:  
PBS only

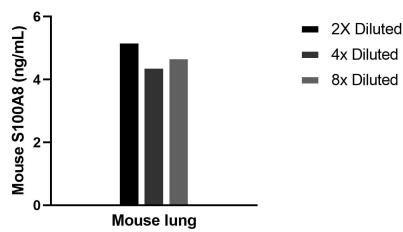
For technical support and original validation data for this product please contact:

T: 1 (888) 4PTGLAB (1-888-478-4522) (toll free in USA), or 1(312) 455-8498 (outside USA)

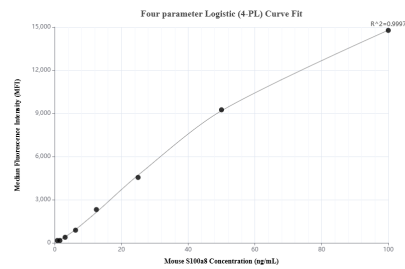
E: [proteintech@ptglab.com](mailto:proteintech@ptglab.com)  
W: [ptglab.com](http://ptglab.com)

This product is exclusively available under Proteintech Group brand and is not available to purchase from any other manufacturer.

Selected Validation Data



Mouse lung conditioned media cultured in RPMI supplemented with 10% fetal bovine serum was collected after culturing for 5 days. An aliquot of the cell culture supernate was removed, assayed for mouse S100A8 and measured 4.7 ng/mL



Cytometric bead array standard curve of MP02237-1, MOUSE S100A8 Recombinant Matched Antibody Pair, PBS Only. Capture antibody: 85972-2-PBS. Detection antibody: 85972-1-PBS. Standard: Eg2959. Range: 1.563-100 ng/mL