

# WTAP Recombinant Matched Antibody Pair, PBS Only

Catalog Number: **MP02241-2**

## Capture Antibody Information

Catalog Number:  
81987-3-PBS  
Host:  
Rabbit  
Isotype:  
IgG  
Purification Method:  
Protein A purification

Clone ID:  
250657H6  
Reactivity:  
human  
Immunogen Catalog Number:  
Ag0259

Conjugate:  
Unconjugated  
Full name:  
Wilms tumor 1 associated protein  
Gene ID:  
9589

## Detection Antibody Information

Catalog Number:  
81987-5-PBS  
Host:  
Rabbit  
Isotype:  
IgG  
Purification Method:  
Protein A purification

Clone ID:  
250657B12  
Reactivity:  
human  
GenBank:  
BC000383  
Immunogen Catalog Number:  
Ag0259

Conjugate:  
Unconjugated  
Full name:  
Wilms tumor 1 associated protein  
Gene ID:  
9589

## Applications

Tested Applications:  
Sandwich ELISA

Range:  
1.56-100 ng/mL (Sandwich ELISA)

Recommended Dilutions:  
It is recommended that this reagent should be titrated in each testing system to obtain optimal results.

## Product Information

MP02241-2 targets WTAP in immunoassays as a matched antibody pair. Validated in Sandwich ELISA.

Capture antibody: WTAP Recombinant antibody, PBS Only (Capture) 81987-3-PBS (250657H6). 100 µg. Concentration 1 mg/mL.

Detection antibody: WTAP Recombinant antibody, PBS Only (Detector) 81987-5-PBS (250657B12). 100 µg. Concentration 1 mg/mL.

Unconjugated rabbit recombinant monoclonal antibody pair in PBS only storage buffer at a concentration of 1 mg/mL, ready for conjugation. Created using Proteintech's proprietary in-house recombinant technology. Recombinant production enables unrivalled batch-to-batch consistency, easy scale-up, and future security of supply.

Matched antibody pairs are designed for use in a variety of assays and platforms that require matched antibody pairs.

Antibody use should be optimized for each application and assay.

## Storage

Storage:  
Store at -80°C.  
Storage buffer:  
PBS only

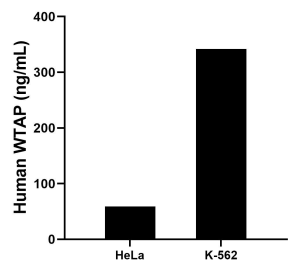
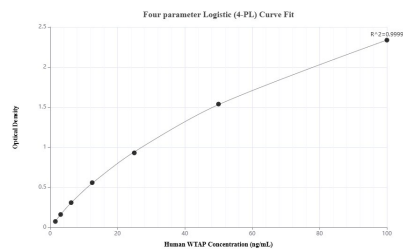
For technical support and original validation data for this product please contact:

T: 1 (888) 4PTGLAB (1-888-478-4522) (toll free in USA), or 1(312) 455-8498 (outside USA)

E: [proteintech@ptglab.com](mailto:proteintech@ptglab.com)  
W: [ptglab.com](http://ptglab.com)

This product is exclusively available under Proteintech Group brand and is not available to purchase from any other manufacturer.

## Selected Validation Data



Sandwich ELISA standard curve of MP02241-2, Human WTAP Recombinant Matched Antibody Pair - PBS only. 81987-3-PBS was coated to a plate as the capture antibody and incubated with serial dilutions of standard Ag0259. 81987-5-PBS was HRP conjugated as the detection antibody. Range: 1.56-100 ng/mL

The mean WTAP concentration was determined to be 59.04 ng/mL in HeLa cell extract based on a 1.3 mg/mL extract load and 341.94 ng/mL in K-562 cell extract based on a 2.5 mg/mL extract load.