

# Mouse TNF-RI/TNFRSF1A

## Recombinant Matched Antibody Pair, PBS Only

Catalog Number: **MP02243-2**

### Capture Antibody Information

**Catalog Number:**  
86083-4-PBS

**Host:**  
Rabbit

**Isotype:**  
IgG

**Purification Method:**  
Protein A purification

**Clone ID:**  
250007G8

**Reactivity:**  
mouse

**Immunogen Catalog Number:**  
Eg0733

**Conjugate:**  
Unconjugated

**Full name:**  
tumor necrosis factor receptor  
superfamily, member 1a

**Gene ID:**  
21937

### Detection Antibody Information

**Catalog Number:**  
86083-3-PBS

**Host:**  
Rabbit

**Isotype:**  
IgG

**Purification Method:**  
Protein A purification

**Clone ID:**  
250007D9

**Reactivity:**  
mouse

**GenBank:**  
NM\_011609.4

**Immunogen Catalog Number:**  
Eg0733

**Conjugate:**  
Unconjugated

**Full name:**  
tumor necrosis factor receptor  
superfamily, member 1a

**Gene ID:**  
21937

### Applications

**Tested Applications:**  
Sandwich ELISA

**Range:**  
39.1-2500 pg/mL (Sandwich ELISA)

**Recommended Dilutions:**  
It is recommended that this reagent  
should be titrated in each testing  
system to obtain optimal results.

### Product Information

MP02243-2 targets TNF-RI/TNFRSF1A in immunoassays as a matched antibody pair. Validated in Sandwich ELISA.

Capture antibody: Mouse TNF-RI/TNFRSF1A Recombinant antibody, PBS Only (Capture) 86083-4-PBS (250007G8).  
100 µg. Concentration 1 mg/mL.

Detection antibody: Mouse TNF-RI/TNFRSF1A Recombinant antibody, PBS Only (Detector) 86083-3-PBS (250007D9).  
100 µg. Concentration 1 mg/mL.

Unconjugated rabbit recombinant monoclonal antibody pair in PBS only storage buffer at a concentration of 1 mg/mL, ready for conjugation. Created using Proteintech's proprietary in-house recombinant technology. Recombinant production enables unrivalled batch-to-batch consistency, easy scale-up, and future security of supply.

Matched antibody pairs are designed for use in a variety of assays and platforms that require matched antibody pairs.

Antibody use should be optimized for each application and assay.

### Storage

**Storage:**  
Store at -80°C.

**Storage buffer:**  
PBS only

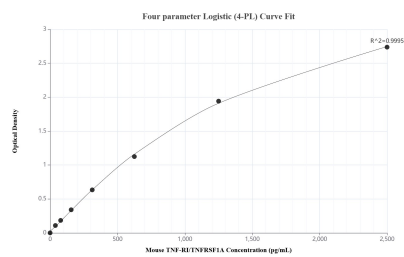
For technical support and original validation data for this product please contact:

T: 1 (888) 4PTGLAB (1-888-478-4522) (toll free  
in USA), or 1(312) 455-8498 (outside USA)

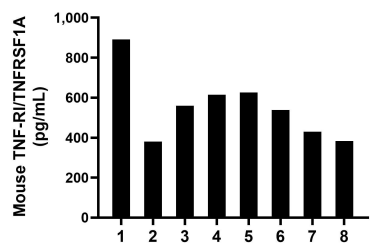
E: [proteintech@ptglab.com](mailto:proteintech@ptglab.com)  
W: [ptglab.com](http://ptglab.com)

**This product is exclusively available under Proteintech  
Group brand and is not available to purchase from any  
other manufacturer.**

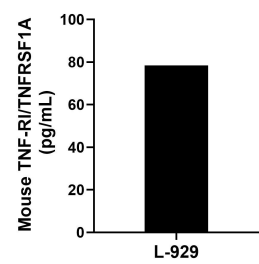
## Selected Validation Data



Sandwich ELISA standard curve of MP02243-2, Mouse TNF-R1/TNFRSF1A Recombinant Matched Antibody Pair - PBS only. 86083-4-PBS was coated to a plate as the capture antibody and incubated with serial dilutions of standard Ego733. 86083-3-PBS was HRP conjugated as the detection antibody. Range: 39.1-2500 pg/mL.



Serum of eight mice was measured. The TNF-R1/TNFRSF1A concentration of detected samples was determined to be 577.3 pg/mL with a range of 380.9-890.8 pg/mL.



L-929 were cultured in DMEM supplemented with 10% fetal bovine serum, 2.5 mM L-glutamine, 100 U/mL penicillin, and 100 µg/mL streptomycin sulfate. An aliquot of the cell culture supernate was removed, assayed for mouse TNF-R1/TNFRSF1A, and measured 78.4 pg/mL.