

NRAS Recombinant Matched Antibody Pair, PBS Only

Catalog Number: **MP02246-1**

Capture Antibody Information

Catalog Number:
83815-4-PBS
Host:
Rabbit
Isotype:
IgG
Purification Method:
Protein A purification

Clone ID:
242810E2
Reactivity:
human
Immunogen Catalog Number:
Ag1081

Conjugate:
Unconjugated
Full name:
neuroblastoma RAS viral (v-ras) oncogene homolog
Gene ID:
4893

Detection Antibody Information

Catalog Number:
83815-3-PBS
Host:
Rabbit
Isotype:
IgG
Purification Method:
Protein A purification

Clone ID:
242810F12
Reactivity:
human
GenBank:
BC005219
Immunogen Catalog Number:
Ag1081

Conjugate:
Unconjugated
Full name:
neuroblastoma RAS viral (v-ras) oncogene homolog
Gene ID:
4893

Applications

Tested Applications:
Cytometric bead array

Range:
0.781-100 ng/mL (Cytometric Bead Array)

Recommended Dilutions:
It is recommended that this reagent should be titrated in each testing system to obtain optimal results.

Product Information

MP02246-1 targets NRAS in immunoassays as a matched antibody pair. Validated in Cytometric bead array.

Capture antibody: NRAS Recombinant antibody, PBS Only (Capture) 83815-4-PBS (242810E2). 100 µg. Concentration 1 mg/mL.

Detection antibody: NRAS Recombinant antibody, PBS Only (Detector) 83815-3-PBS (242810F12). 100 µg. Concentration 1 mg/mL.

Unconjugated rabbit recombinant monoclonal antibody pair in PBS only storage buffer at a concentration of 1 mg/mL, ready for conjugation. Created using Proteintech's proprietary in-house recombinant technology. Recombinant production enables unrivalled batch-to-batch consistency, easy scale-up, and future security of supply.

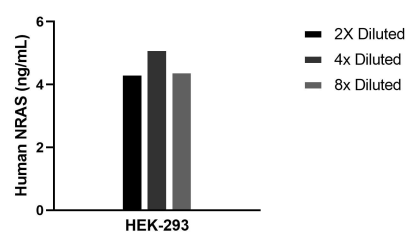
Matched antibody pairs are designed for use in a variety of assays and platforms that require matched antibody pairs.

Antibody use should be optimized for each application and assay.

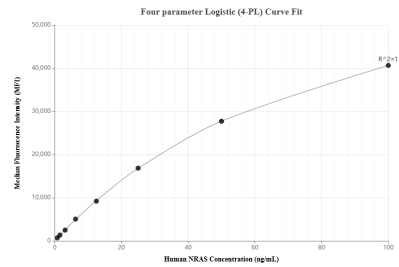
Storage

Storage:
Store at -80°C.
Storage buffer:
PBS only

Selected Validation Data



The mean NRAS concentration was determined to be 4.6 ng/mL in HEK-293 cell extract based on a 2.9 mg/mL extract load.



Cytometric bead array standard curve of MP02246-1, NRAS Recombinant Matched Antibody Pair, PBS Only. Capture antibody: 83815-4-PBS. Detection antibody: 83815-3-PBS. Standard: Ag1081. Range: 0.781-100 ng/mL.