

IRF2BP1 Recombinant Matched Antibody Pair, PBS Only

Catalog Number: **MP02247-2**

Capture Antibody Information

Catalog Number:
86048-4-PBS
Host:
Rabbit
Isotype:
IgG
Purification Method:
Protein A purification

Clone ID:
250630G8
Reactivity:
human
Immunogen Catalog Number:
Ag4596

Conjugate:
Unconjugated
Full name:
interferon regulatory factor 2 binding protein 1
Gene ID:
26145

Detection Antibody Information

Catalog Number:
86048-2-PBS
Host:
Rabbit
Isotype:
IgG
Purification Method:
Protein A purification

Clone ID:
250630G11
Reactivity:
human
GenBank:
BC038222
Immunogen Catalog Number:
Ag4596

Conjugate:
Unconjugated
Full name:
interferon regulatory factor 2 binding protein 1
Gene ID:
26145

Applications

Tested Applications:
Sandwich ELISA

Range:
0.313-20 ng/mL (Sandwich ELISA)

Recommended Dilutions:
It is recommended that this reagent should be titrated in each testing system to obtain optimal results.

Product Information

MP02247-2 targets IRF2BP1 in immunoassays as a matched antibody pair. Validated in Sandwich ELISA.

Capture antibody: IRF2BP1 Recombinant antibody, PBS Only (Capture) 86048-4-PBS (250630G8). 100 µg. Concentration 1 mg/mL.

Detection antibody: IRF2BP1 Recombinant antibody, PBS Only (Detector) 86048-2-PBS (250630G11). 100 µg. Concentration 1 mg/mL.

Unconjugated rabbit recombinant monoclonal antibody pair in PBS only storage buffer at a concentration of 1 mg/mL, ready for conjugation. Created using Proteintech's proprietary in-house recombinant technology. Recombinant production enables unrivalled batch-to-batch consistency, easy scale-up, and future security of supply.

Matched antibody pairs are designed for use in a variety of assays and platforms that require matched antibody pairs.

Antibody use should be optimized for each application and assay.

Storage

Storage:
Store at -80°C.
Storage buffer:
PBS only

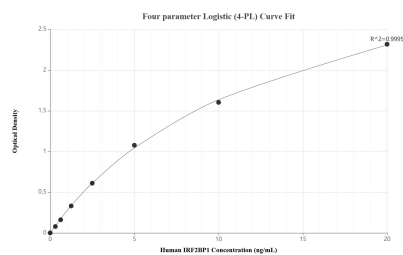
For technical support and original validation data for this product please contact:

T: 1 (888) 4PTGLAB (1-888-478-4522) (toll free in USA), or 1(312) 455-8498 (outside USA)

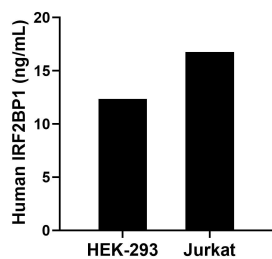
E: proteintech@ptglab.com
W: ptglab.com

This product is exclusively available under Proteintech Group brand and is not available to purchase from any other manufacturer.

Selected Validation Data



Sandwich ELISA standard curve of MP02247-2, Human IRF2BP1 Recombinant Matched Antibody Pair - PBS only. 86048-4-PBS was coated to a plate as the capture antibody and incubated with serial dilutions of standard Ag4596. 86048-2-PBS was HRP conjugated as the detection antibody. Range: 0.313-20 ng/mL.



The mean IRF2BP1 concentration was determined to be 12.35 ng/mL in HEK-293 cell extract based on a 2.20 mg/mL extract load and 16.76 ng/mL in Jurkat cell extract based on a 1.20 mg/mL extract load.