

For Research Use Only



# Serpin C1/Antithrombin III Recombinant Matched Antibody Pair, PBS Only

Catalog Number:MP02252-2

## Capture Antibody Information

**Catalog Number:**  
86067-2-PBS  
**Host:**  
Rabbit  
**Isotype:**  
IgG  
**Purification Method:**  
Protein A purification

**Clone ID:**  
250574C5  
**Reactivity:**  
human  
**Immunogen Catalog Number:**  
Eg3100

**Conjugate:**  
Unconjugated  
**Full name:**  
serpin peptidase inhibitor, clade C (antithrombin), member 1  
**Gene ID:**  
462

## Detection Antibody Information

**Catalog Number:**  
86067-3-PBS  
**Host:**  
Rabbit  
**Isotype:**  
IgG  
**Purification Method:**  
Protein A purification

**Clone ID:**  
250574C9  
**Reactivity:**  
human  
**GenBank:**  
NM\_000488.4  
**Immunogen Catalog Number:**  
Eg3100

**Conjugate:**  
Unconjugated  
**Full name:**  
serpin peptidase inhibitor, clade C (antithrombin), member 1  
**Gene ID:**  
462

## Applications

**Tested Applications:**  
Sandwich ELISA

**Range:**  
0.313-20 ng/mL (Sandwich ELISA)

**Recommended Dilutions:**  
It is recommended that this reagent should be titrated in each testing system to obtain optimal results.

## Product Information

MP02252-2 targets Serpin C1/Antithrombin III in immunoassays as a matched antibody pair. Validated in Sandwich ELISA.

Capture antibody: Serpin C1/Antithrombin III Recombinant monoclonal antibody, PBS Only (Capture) 86067-2-PBS (250574C5). 100 µg. Concentration 1 mg/ml.

Detection antibody: Serpin C1/Antithrombin III Recombinant monoclonal antibody, PBS Only (Detector) 86067-3-PBS (250574C9). 100 µg. Concentration 1 mg/ml.

Unconjugated rabbit recombinant monoclonal antibody pair in PBS only storage buffer at a concentration of 1 mg/mL, ready for conjugation. Created using Proteintech's proprietary in-house recombinant technology. Recombinant production enables unrivalled batch-to-batch consistency, easy scale-up, and future security of supply.

Matched antibody pairs are designed for use in a variety of assays and platforms that require matched antibody pairs.

Antibody use should be optimized for each application and assay.

## Storage

**Storage:**  
Store at -80°C.  
**Storage buffer:**  
PBS only

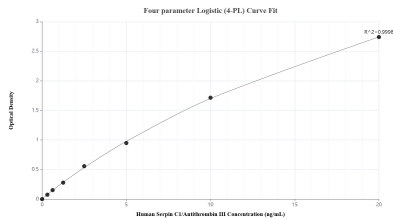
For technical support and original validation data for this product please contact:

T: 1 (888) 4PTGLAB (1-888-478-4522) (toll free in USA), or 1(312) 455-8498 (outside USA)

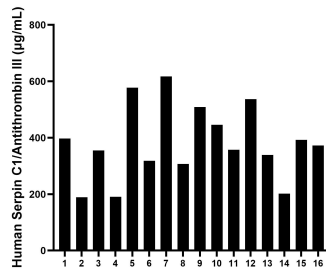
E: [proteintech@ptglab.com](mailto:proteintech@ptglab.com)  
W: [ptglab.com](http://ptglab.com)

**This product is exclusively available under Proteintech Group brand and is not available to purchase from any other manufacturer.**

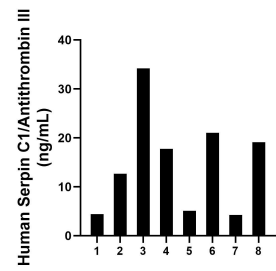
## Selected Validation Data



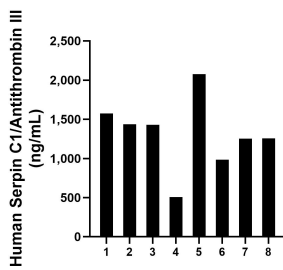
Sandwich ELISA standard curve of MP02252-2, Human Serpin C1/Antithrombin III Recombinant Matched Antibody Pair - PBS only. 86067-2-PBS was coated to a plate as the capture antibody and incubated with serial dilutions of standard Eg3100. 86067-3-PBS was HRP conjugated as the detection antibody. Range: 0.313-20 ng/mL



Serum of sixteen individual healthy human donors was measured. The Serpin C1/Antithrombin III concentration of detected samples was determined to be 381.81 µg/mL with a range of 189.31-617.31 µg/mL



Urine of eight individual healthy human donors was measured. The Serpin C1/Antithrombin III concentration of detected samples was determined to be 14.82 ng/mL with a range of 4.28-34.20 ng/mL



Human milk of eight individual healthy human donors was measured. The Serpin C1/Antithrombin III concentration of detected samples was determined to be 1,313.73 ng/mL with a range of 505.80-2,074.98 ng/mL