

For Research Use Only



# LILRB2 Recombinant Matched Antibody Pair, PBS Only

Catalog Number:MP02254-2

## Capture Antibody Information

**Catalog Number:**  
86066-3-PBS  
**Host:**  
Rabbit  
**Isotype:**  
IgG  
**Purification Method:**  
Protein A purification

**Clone ID:**  
250299G8  
**Reactivity:**  
human  
**Immunogen Catalog Number:**  
Eg2839

**Conjugate:**  
Unconjugated  
**Full name:**  
leukocyte immunoglobulin-like receptor, subfamily B (with TM and ITIM domains), member 2  
**Gene ID:**  
10288

## Detection Antibody Information

**Catalog Number:**  
86066-2-PBS  
**Host:**  
Rabbit  
**Isotype:**  
IgG  
**Purification Method:**  
Protein A purification

**Clone ID:**  
250299B4  
**Reactivity:**  
human  
**GenBank:**  
NM\_005874.4  
**Immunogen Catalog Number:**  
Eg2839

**Conjugate:**  
Unconjugated  
**Full name:**  
leukocyte immunoglobulin-like receptor, subfamily B (with TM and ITIM domains), member 2  
**Gene ID:**  
10288

## Applications

**Tested Applications:**  
Sandwich ELISA

**Range:**  
78.1-5000 pg/mL (Sandwich ELISA)

**Recommended Dilutions:**  
It is recommended that this reagent should be titrated in each testing system to obtain optimal results.

## Product Information

MP02254-2 targets LILRB2 in immunoassays as a matched antibody pair. Validated in Sandwich ELISA.

Capture antibody: LILRB2 Recombinant antibody, PBS Only (Capture) 86066-3-PBS (250299G8). 100 µg. Concentration 1 mg/mL.

Detection antibody: LILRB2 Recombinant antibody, PBS Only (Capture/Detector) 86066-2-PBS (250299B4). 100 µg. Concentration 1 mg/mL.

Unconjugated rabbit recombinant monoclonal antibody pair in PBS only storage buffer at a concentration of 1 mg/mL, ready for conjugation. Created using Proteintech's proprietary in-house recombinant technology. Recombinant production enables unrivalled batch-to-batch consistency, easy scale-up, and future security of supply.

Matched antibody pairs are designed for use in a variety of assays and platforms that require matched antibody pairs.

Antibody use should be optimized for each application and assay.

## Storage

**Storage:**  
Store at -80°C.  
**Storage buffer:**  
PBS only

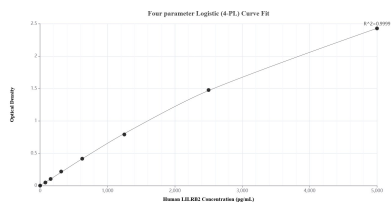
For technical support and original validation data for this product please contact:

T: 1 (888) 4PTGLAB (1-888-478-4522) (toll free in USA), or 1(312) 455-8498 (outside USA)

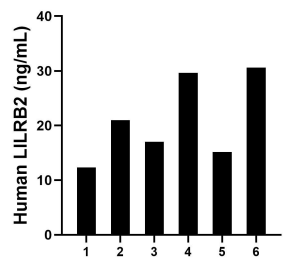
E: [proteintech@ptglab.com](mailto:proteintech@ptglab.com)  
W: [ptglab.com](http://ptglab.com)

This product is exclusively available under Proteintech Group brand and is not available to purchase from any other manufacturer.

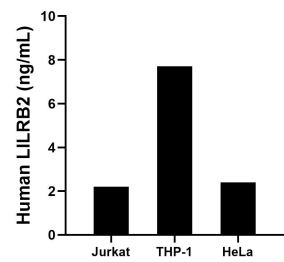
## Selected Validation Data



Sandwich ELISA standard curve of MP02254-2, Human LILRB2 Recombinant Matched Antibody Pair - PBS only. 86066-3-PBS was coated to a plate as the capture antibody and incubated with serial dilutions of standard Eg2839. 86066-2-PBS was HRP conjugated as the detection antibody. Range: 78.1-5000 pg/mL.



Plasma of six individual healthy human donors was measured. The LILRB2 concentration of detected samples was determined to be 21.0 ng/mL with a range of 12.4-30.6 ng/mL.



The mean LILRB2 concentration was determined to be 2.2 ng/mL in Jurkat cell extract based on a 1.2 mg/mL extract load, 7.7 ng/mL in THP-1 cell extract based on a 3.4 mg/mL extract load and 2.4 ng/mL in HeLa cell extract based on a 1.4 mg/mL extract load.