

For Research Use Only



MMP2 Recombinant Matched Antibody Pair, PBS Only

Catalog Number:MP02255-1

Capture Antibody Information

Catalog Number:
81515-4-PBS

Host:
Rabbit

Isotype:
IgG

Purification Method:
Protein A purification

Clone ID:
250316H2

Reactivity:
human

Immunogen Catalog Number:
Eg1650

Conjugate:
Unconjugated

Full name:
matrix metalloproteinase 2
(gelatinase A, 72kDa gelatinase,
72kDa type IV collagenase)

Gene ID:
4313

Detection Antibody Information

Catalog Number:
81515-3-PBS

Host:
Rabbit

Isotype:
IgG

Purification Method:
Protein A purification

Clone ID:
250316D7

Reactivity:
human

GenBank:
BC002576

Immunogen Catalog Number:
Eg1650

Conjugate:
Unconjugated

Full name:
matrix metalloproteinase 2
(gelatinase A, 72kDa gelatinase,
72kDa type IV collagenase)

Gene ID:
4313

Applications

Tested Applications:
Cytometric bead array

Range:
1.563-200 ng/mL (Cytometric Bead Array)

Recommended Dilutions:
It is recommended that this reagent should be titrated in each testing system to obtain optimal results.

Product Information

MP02255-1 targets MMP2 in immunoassays as a matched antibody pair. Validated in Cytometric bead array.

Capture antibody: MMP2 Recombinant antibody, PBS Only (Capture) 81515-4-PBS (250316H2). 100 µg. Concentration 1 mg/mL.

Detection antibody: MMP2 Recombinant antibody, PBS Only (Detector) 81515-3-PBS (250316D7). 100 µg. Concentration 1 mg/mL.

Unconjugated rabbit recombinant monoclonal antibody pair in PBS only storage buffer at a concentration of 1 mg/mL, ready for conjugation. Created using Proteintech's proprietary in-house recombinant technology. Recombinant production enables unrivalled batch-to-batch consistency, easy scale-up, and future security of supply.

Matched antibody pairs are designed for use in a variety of assays and platforms that require matched antibody pairs.

Antibody use should be optimized for each application and assay.

Storage

Storage:
Store at -80°C.
Storage buffer:
PBS only

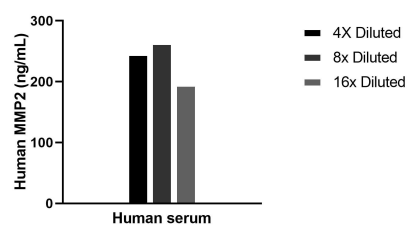
For technical support and original validation data for this product please contact:

T: 1 (888) 4PTGLAB (1-888-478-4522) (toll free in USA), or 1(312) 455-8498 (outside USA)

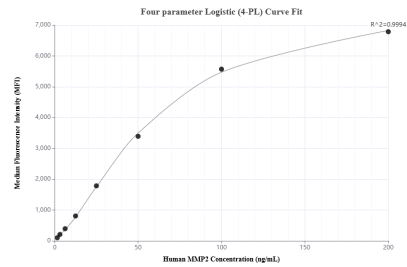
E: proteintech@ptglab.com
W: ptglab.com

This product is exclusively available under Proteintech Group brand and is not available to purchase from any other manufacturer.

Selected Validation Data



The mean MMP2 concentration was determined to be 234.5 ng/mL in human serum.



Cytometric bead array standard curve of MP02255-1, MMP2 Recombinant Matched Antibody Pair, PBS Only. Capture antibody: 81515-4-PBS. Detection antibody: 81515-3-PBS. Standard: Eg1650. Range: 1.563-200 ng/mL.