

Alpha 2-Antiplasmin Recombinant Matched Antibody Pair, PBS Only

Catalog Number: **MP02257-1**

Capture Antibody Information

Catalog Number:
86042-2-PBS
Host:
Rabbit
Isotype:
IgG
Purification Method:
Protein A purification

Clone ID:
250548E4
Reactivity:
human
Immunogen Catalog Number:
Eg3041

Conjugate:
Unconjugated
Full name:
serpin peptidase inhibitor, clade F (alpha-2 antiplasmin, pigment epithelium derived factor), member 2
Gene ID:
5345

Detection Antibody Information

Catalog Number:
86042-1-PBS
Host:
Rabbit
Isotype:
IgG
Purification Method:
Protein A purification

Clone ID:
250548E2
Reactivity:
human
GenBank:
NM_000934.4
Immunogen Catalog Number:
Eg3041

Conjugate:
Unconjugated
Full name:
serpin peptidase inhibitor, clade F (alpha-2 antiplasmin, pigment epithelium derived factor), member 2
Gene ID:
5345

Applications

Tested Applications:
Cytometric bead array

Range:
1.563-200 ng/mL (Cytometric Bead Array)

Recommended Dilutions:
It is recommended that this reagent should be titrated in each testing system to obtain optimal results.

Product Information

MP02257-1 targets Alpha 2-Antiplasmin in immunoassays as a matched antibody pair. Validated in Cytometric bead array.

Capture antibody: SERPINF2 Recombinant antibody, PBS Only (Capture) 86042-2-PBS (250548E4). 100 µg. Concentration 1 mg/mL.

Detection antibody: SERPINF2 Recombinant antibody, PBS Only (Detector) 86042-1-PBS (250548E2). 100 µg. Concentration 1 mg/mL.

Unconjugated rabbit recombinant monoclonal antibody pair in PBS only storage buffer at a concentration of 1 mg/mL, ready for conjugation. Created using Proteintech's proprietary in-house recombinant technology. Recombinant production enables unrivalled batch-to-batch consistency, easy scale-up, and future security of supply.

Matched antibody pairs are designed for use in a variety of assays and platforms that require matched antibody pairs.

Antibody use should be optimized for each application and assay.

Storage

Storage:
Store at -80°C.
Storage buffer:
PBS only

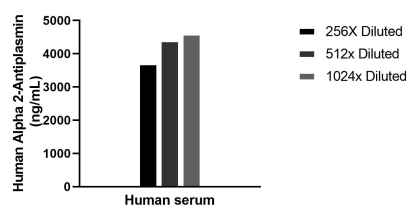
For technical support and original validation data for this product please contact:

T: 1 (888) 4PTGLAB (1-888-478-4522) (toll free in USA), or 1(312) 455-8498 (outside USA)

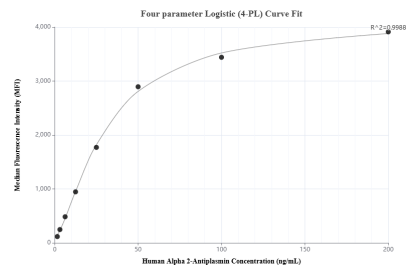
E: proteintech@ptglab.com
W: ptglab.com

This product is exclusively available under Proteintech Group brand and is not available to purchase from any other manufacturer.

Selected Validation Data



The mean Alpha 2-Antiplasmin concentration was determined to be 4232.6 ng/mL in human serum.



Cytometric bead array standard curve of MP02257-1, Alpha 2-Antiplasmin Recombinant Matched Antibody Pair, PBS Only. Capture antibody: 86042-2-PBS. Detection antibody: 86042-1-PBS. Standard: Eg3041. Range: 1.563-200 ng/mL.