

# Mouse VISTA Recombinant Matched Antibody Pair, PBS Only

Catalog Number: **MP02260-1**

## Capture Antibody Information

**Catalog Number:**

86114-2-PBS

**Host:**

Rabbit

**Isotype:**

IgG

**Purification Method:**

Protein A purification

**Clone ID:**

250122A7

**Reactivity:**

mouse

**Immunogen Catalog Number:**

Eg2809

**Conjugate:**

Unconjugated

**Full name:**

RIKEN cDNA 4632428N05 gene

**Gene ID:**

74048

## Detection Antibody Information

**Catalog Number:**

86114-1-PBS

**Host:**

Rabbit

**Isotype:**

IgG

**Purification Method:**

Protein A purification

**Clone ID:**

250122F8

**Reactivity:**

mouse

**GenBank:**

NM\_001159572.1

**Immunogen Catalog Number:**

Eg2809

**Conjugate:**

Unconjugated

**Full name:**

RIKEN cDNA 4632428N05 gene

**Gene ID:**

74048

## Applications

**Tested Applications:**

Cytometric bead array

**Range:**

1.563-100 ng/mL (Cytometric Bead Array)

**Recommended Dilutions:**

It is recommended that this reagent should be titrated in each testing system to obtain optimal results.

## Product Information

MP02260-1 targets VISTA in immunoassays as a matched antibody pair. Validated in Cytometric bead array.

Capture antibody: Mouse VISTA Recombinant antibody, PBS Only (Capture) 86114-2-PBS (250122A7). 100 µg. Concentration 1 mg/mL.

Detection antibody: Mouse VISTA Recombinant antibody, PBS Only (Detector) 86114-1-PBS (250122F8). 100 µg. Concentration 1 mg/mL.

Unconjugated rabbit recombinant monoclonal antibody pair in PBS only storage buffer at a concentration of 1 mg/mL, ready for conjugation. Created using Proteintech's proprietary in-house recombinant technology. Recombinant production enables unrivalled batch-to-batch consistency, easy scale-up, and future security of supply.

Matched antibody pairs are designed for use in a variety of assays and platforms that require matched antibody pairs.

Antibody use should be optimized for each application and assay.

## Storage

**Storage:**

Store at -80°C.

**Storage buffer:**

PBS only

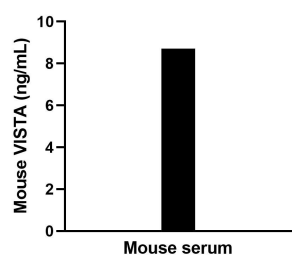
For technical support and original validation data for this product please contact:

T: 1 (888) 4PTGLAB (1-888-478-4522) (toll free in USA), or 1(312) 455-8498 (outside USA)

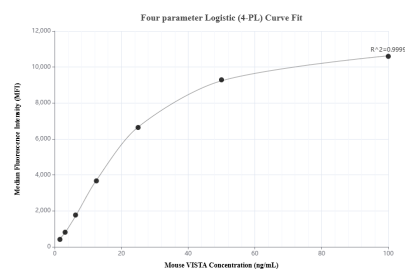
E: [proteintech@ptglab.com](mailto:proteintech@ptglab.com)  
W: [ptglab.com](http://ptglab.com)

**This product is exclusively available under Proteintech Group brand and is not available to purchase from any other manufacturer.**

# Selected Validation Data



The mean VISTA concentration was determined to be 8.8 ng/mL in mouse serum.



Cytometric bead array standard curve of MP02260-1, MOUSE VISTA Recombinant Matched Antibody Pair, PBS Only. Capture antibody: 86114-2-PBS. Detection antibody: 86114-1-PBS. Standard: Eg2809. Range: 1.563-100 ng/mL