

GCDFP-15/PIP Recombinant Matched Antibody Pair, PBS Only

Catalog Number: **MP02262-1**

Capture Antibody Information

Catalog Number:

86152-2-PBS

Host:

Rabbit

Isotype:

IgG

Purification Method:

Protein A purification

Clone ID:

250676E3

Reactivity:

human

Immunogen Catalog Number:

Eg3018

Conjugate:

Unconjugated

Full name:

prolactin-induced protein

Gene ID:

5304

Detection Antibody Information

Catalog Number:

86152-1-PBS

Host:

Rabbit

Isotype:

IgG

Purification Method:

Protein A purification

Clone ID:

250676D4

Reactivity:

human

GenBank:

NM_002652.3

Immunogen Catalog Number:

Eg3018

Conjugate:

Unconjugated

Full name:

prolactin-induced protein

Gene ID:

5304

Applications

Tested Applications:

Cytometric bead array

Range:

0.781-100 ng/mL (Cytometric Bead Array)

Recommended Dilutions:

It is recommended that this reagent should be titrated in each testing system to obtain optimal results.

Product Information

MP02262-1 targets GCDFP-15/PIP in immunoassays as a matched antibody pair. Validated in Cytometric bead array.

Capture antibody: GCDFP-15/PIP Recombinant antibody, PBS Only (Capture) 86152-2-PBS (250676E3). 100 µg. Concentration 1 mg/mL.

Detection antibody: GCDFP-15/PIP Recombinant antibody, PBS Only (Detector) 86152-1-PBS (250676D4). 100 µg. Concentration 1 mg/mL.

Unconjugated rabbit recombinant monoclonal antibody pair in PBS only storage buffer at a concentration of 1 mg/mL, ready for conjugation. Created using Proteintech's proprietary in-house recombinant technology. Recombinant production enables unrivalled batch-to-batch consistency, easy scale-up, and future security of supply.

Matched antibody pairs are designed for use in a variety of assays and platforms that require matched antibody pairs.

Antibody use should be optimized for each application and assay.

Storage

Storage:

Store at -80°C.

Storage buffer:

PBS only

For technical support and original validation data for this product please contact:

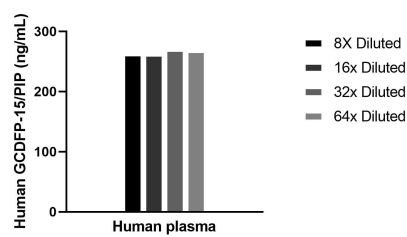
T: 1 (888) 4PTGLAB (1-888-478-4522) (toll free in USA), or 1(312) 455-8498 (outside USA)

E: proteintech@ptglab.com

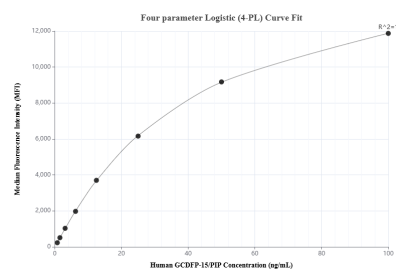
W: ptglab.com

This product is exclusively available under Proteintech Group brand and is not available to purchase from any other manufacturer.

Selected Validation Data



The mean GCDPF-15/PIP concentration was determined to be 267.1 ng/mL in human serum.



Cytometric bead array standard curve of MP02262-1, GCDPF-15/PIP Recombinant Matched Antibody Pair, PBS Only. Capture antibody: 86152-2-PBS. Detection antibody: 86152-1-PBS. Standard: Eg3018. Range: 0.781-100 ng/mL.