

GCDFP-15/PIP Recombinant Matched Antibody Pair, PBS Only

Catalog Number: **MP02262-2**

Capture Antibody Information

Catalog Number:

86152-1-PBS

Host:

Rabbit

Isotype:

IgG

Purification Method:

Protein A purification

Clone ID:

250676D4

Reactivity:

human

Immunogen Catalog Number:

Eg3018

Conjugate:

Unconjugated

Full name:

prolactin-induced protein

Gene ID:

5304

Detection Antibody Information

Catalog Number:

86152-3-PBS

Host:

Rabbit

Isotype:

IgG

Purification Method:

Protein A purification

Clone ID:

250676B11

Reactivity:

human

GenBank:

NM_002652.3

Immunogen Catalog Number:

Eg3018

Conjugate:

Unconjugated

Full name:

prolactin-induced protein

Gene ID:

5304

Applications

Tested Applications:

Sandwich ELISA

Range:

0.156-10 ng/mL (Sandwich ELISA)

Recommended Dilutions:

It is recommended that this reagent should be titrated in each testing system to obtain optimal results.

Product Information

MP02262-2 targets GCDFP-15/PIP in immunoassays as a matched antibody pair. Validated in Sandwich ELISA.

Capture antibody: GCDFP-15/PIP Recombinant antibody, PBS Only (Capture/Detector) 86152-1-PBS (250676D4). 100 µg. Concentration 1 mg/mL.

Detection antibody: PIP Recombinant antibody, PBS Only (Detector) 86152-3-PBS (250676B11). 100 µg. Concentration 1 mg/mL.

Unconjugated rabbit recombinant monoclonal antibody pair in PBS only storage buffer at a concentration of 1 mg/mL, ready for conjugation. Created using Proteintech's proprietary in-house recombinant technology. Recombinant production enables unrivalled batch-to-batch consistency, easy scale-up, and future security of supply.

Matched antibody pairs are designed for use in a variety of assays and platforms that require matched antibody pairs.

Antibody use should be optimized for each application and assay.

Storage

Storage:

Store at -80°C.

Storage buffer:

PBS only

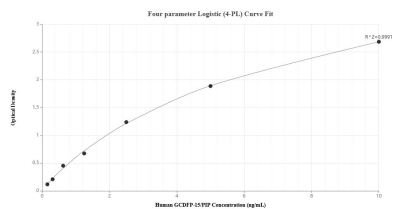
For technical support and original validation data for this product please contact:

T: 1 (888) 4PTGLAB (1-888-478-4522) (toll free in USA), or 1(312) 455-8498 (outside USA)

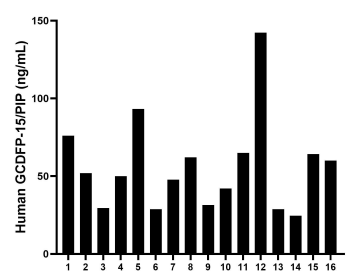
E: proteintech@ptglab.com
W: ptglab.com

This product is exclusively available under Proteintech Group brand and is not available to purchase from any other manufacturer.

Selected Validation Data



Sandwich ELISA standard curve of MP02262-2, Human GCDFP-15/PIP Recombinant Matched Antibody Pair - PBS only. 86152-1-PBS was coated to a plate as the capture antibody and incubated with serial dilutions of standard Eg3018. 86152-3-PBS was HRP conjugated as the detection antibody. Range: 0.156-10 ng/mL



Serum of six individual healthy human donors was measured. The human TNFR1/CD120a concentration of detected samples was determined to be 56.11 ng/mL with a range of 24.53 - 142.30 ng/mL