

CTHRC1 Recombinant Matched Antibody Pair, PBS Only

Catalog Number: **MP02264-1**

Capture Antibody Information

Catalog Number:
83629-4-PBS
Host:
Rabbit
Isotype:
IgG
Purification Method:
Protein A purification

Clone ID:
250319C3
Reactivity:
human
Immunogen Catalog Number:
Eg2824

Conjugate:
Unconjugated
Full name:
collagen triple helix repeat containing 1
Gene ID:
115908

Detection Antibody Information

Catalog Number:
83629-3-PBS
Host:
Rabbit
Isotype:
IgG
Purification Method:
Protein A purification

Clone ID:
250319G11
Reactivity:
human
GenBank:
NM_138455.3
Immunogen Catalog Number:
Eg2824

Conjugate:
Unconjugated
Full name:
collagen triple helix repeat containing 1
Gene ID:
115908

Applications

Tested Applications:
Cytometric bead array

Range:
0.156-20 ng/mL (Cytometric Bead Array)

Recommended Dilutions:
It is recommended that this reagent should be titrated in each testing system to obtain optimal results.

Product Information

MP02264-1 targets CTHRC1 in immunoassays as a matched antibody pair. Validated in Cytometric bead array.

Capture antibody: CTHRC1 Recombinant antibody, PBS Only (Capture) 83629-4-PBS (250319C3). 100 µg. Concentration 1 mg/mL.

Detection antibody: CTHRC1 Recombinant antibody, PBS Only (Detector) 83629-3-PBS (250319G11). 100 µg. Concentration 1 mg/mL.

Unconjugated rabbit recombinant monoclonal antibody pair in PBS only storage buffer at a concentration of 1 mg/mL, ready for conjugation. Created using Proteintech's proprietary in-house recombinant technology. Recombinant production enables unrivalled batch-to-batch consistency, easy scale-up, and future security of supply.

Matched antibody pairs are designed for use in a variety of assays and platforms that require matched antibody pairs.

Antibody use should be optimized for each application and assay.

Storage

Storage:
Store at -80°C.
Storage buffer:
PBS only

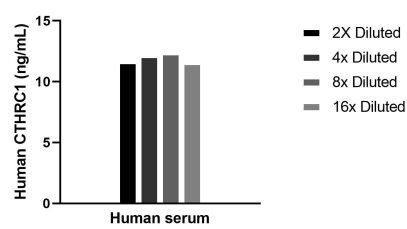
For technical support and original validation data for this product please contact:

T: 1 (888) 4PTGLAB (1-888-478-4522) (toll free in USA), or 1(312) 455-8498 (outside USA)

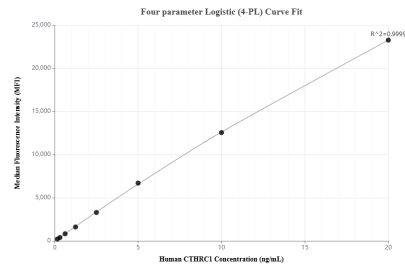
E: proteintech@ptglab.com
W: ptglab.com

This product is exclusively available under Proteintech Group brand and is not available to purchase from any other manufacturer.

Selected Validation Data



The mean CTHRC1 concentration was determined to be 11.9 ng/mL in human serum.



Cytometric bead array standard curve of MP02264-1, CTHRC1 Recombinant Matched Antibody Pair, PBS Only. Capture antibody: 83629-4-PBS. Detection antibody: 83629-3-PBS. Standard: Eg2824. Range: 0.156-20 ng/mL.