

Kallikrein 6 Recombinant Matched Antibody Pair, PBS Only

Catalog Number: **MP02265-1**

Capture Antibody Information

Catalog Number:

86108-2-PBS

Host:

Rabbit

Isotype:

IgG

Purification Method:

Protein A purification

Clone ID:

250322F11

Reactivity:

human

Immunogen Catalog Number:

Eg2826

Conjugate:

Unconjugated

Full name:

kallikrein-related peptidase 6

Gene ID:

5653

Detection Antibody Information

Catalog Number:

86108-1-PBS

Host:

Rabbit

Isotype:

IgG

Purification Method:

Protein A purification

Clone ID:

250322G7

Reactivity:

human

GenBank:

NM_001012964.2

Immunogen Catalog Number:

Eg2826

Conjugate:

Unconjugated

Full name:

kallikrein-related peptidase 6

Gene ID:

5653

Applications

Tested Applications:

Sandwich ELISA

Range:

78.1-5000 pg/mL (Sandwich ELISA)

Recommended Dilutions:

It is recommended that this reagent should be titrated in each testing system to obtain optimal results.

Product Information

MP02265-1 targets Kallikrein 6 in immunoassays as a matched antibody pair. Validated in Sandwich ELISA.

Capture antibody: KLK6 Recombinant antibody, PBS Only (Capture) 86108-2-PBS (250322F11). 100 µg. Concentration 1 mg/mL.

Detection antibody: KLK6 Recombinant antibody, PBS Only (Detector) 86108-1-PBS (250322G7). 100 µg. Concentration 1 mg/mL.

Unconjugated rabbit recombinant monoclonal antibody pair in PBS only storage buffer at a concentration of 1 mg/mL, ready for conjugation. Created using Proteintech's proprietary in-house recombinant technology. Recombinant production enables unrivalled batch-to-batch consistency, easy scale-up, and future security of supply.

Matched antibody pairs are designed for use in a variety of assays and platforms that require matched antibody pairs.

Antibody use should be optimized for each application and assay.

Storage

Storage:

Store at -80°C.

Storage buffer:

PBS only

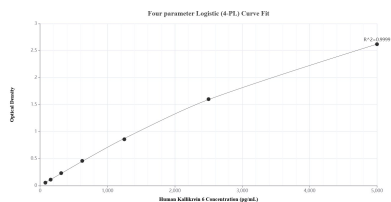
For technical support and original validation data for this product please contact:

T: 1 (888) 4PTGLAB (1-888-478-4522) (toll free in USA), or 1(312) 455-8498 (outside USA)

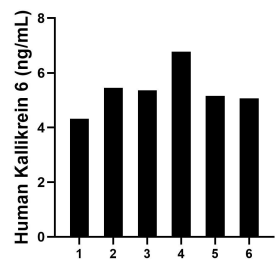
E: proteintech@ptglab.com
W: ptglab.com

This product is exclusively available under Proteintech Group brand and is not available to purchase from any other manufacturer.

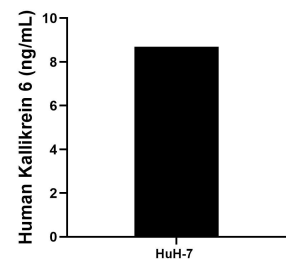
Selected Validation Data



Sandwich ELISA standard curve of MP02265-1, Human Kallikrein 6 Recombinant Matched Antibody Pair - PBS only. 86108-2-PBS was coated to a plate as the capture antibody and incubated with serial dilutions of standard Eg2826. 86108-1-PBS was HRP conjugated as the detection antibody. Range: 78.1-5000 pg/mL



Serum of six individual healthy human donors was measured. The Kallikrein 6 concentration of detected samples was determined to be 5.4 ng/mL with a range of 4.3-6.8 ng/mL.



The mean Kallikrein 6 concentration was determined to be 8.7 ng/mL in HuH-7 cell extract based on a 1.4 mg/mL extract load.