

For Research Use Only



Myogenin Recombinant Matched Antibody Pair, PBS Only

Catalog Number:MP02266-1

Capture Antibody Information

Catalog Number:
86192-2-PBS
Host:
Rabbit
Isotype:
IgG
Purification Method:
Protein A purification

Clone ID:
250187F10
Reactivity:
human
Immunogen Catalog Number:
Ag25081

Conjugate:
Unconjugated
Full name:
myogenin (myogenic factor 4)
Gene ID:
4656

Detection Antibody Information

Catalog Number:
86192-1-PBS
Host:
Rabbit
Isotype:
IgG
Purification Method:
Protein A purification

Clone ID:
250187E3
Reactivity:
human
GenBank:
BC053899
Immunogen Catalog Number:
Ag25081

Conjugate:
Unconjugated
Full name:
myogenin (myogenic factor 4)
Gene ID:
4656

Applications

Tested Applications:
Sandwich ELISA

Range:
78.1-5000 pg/mL (Sandwich ELISA)

Recommended Dilutions:
It is recommended that this reagent should be titrated in each testing system to obtain optimal results.

Product Information

MP02266-1 targets Myogenin in immunoassays as a matched antibody pair. Validated in Sandwich ELISA.

Capture antibody: Myogenin Recombinant antibody, PBS Only (Capture) 86192-2-PBS (250187F10). 100 µg. Concentration 1 mg/mL.

Detection antibody: Myogenin Recombinant antibody, PBS Only (Detector) 86192-1-PBS (250187E3). 100 µg. Concentration 1 mg/mL.

Unconjugated rabbit recombinant monoclonal antibody pair in PBS only storage buffer at a concentration of 1 mg/mL, ready for conjugation. Created using Proteintech's proprietary in-house recombinant technology. Recombinant production enables unrivalled batch-to-batch consistency, easy scale-up, and future security of supply.

Matched antibody pairs are designed for use in a variety of assays and platforms that require matched antibody pairs.

Antibody use should be optimized for each application and assay.

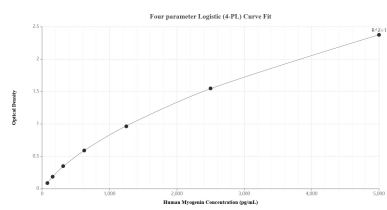
Storage

Storage:
Store at -80°C.
Storage buffer:
PBS only

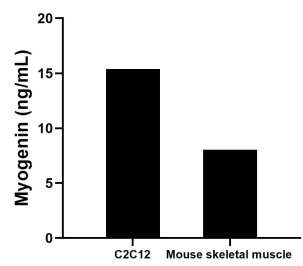
For technical support and original validation data for this product please contact:
T: 1 (888) 4PTGLAB (1-888-478-4522) (toll free in USA), or 1(312) 455-8498 (outside USA)
E: proteintech@ptglab.com
W: ptglab.com

This product is exclusively available under Proteintech Group brand and is not available to purchase from any other manufacturer.

Selected Validation Data



Sandwich ELISA standard curve of MP02266-1, Human Myogenin Recombinant Matched Antibody Pair - PBS only. 86192-2-PBS was coated to a plate as the capture antibody and incubated with serial dilutions of standard Ag25081. 86192-1-PBS was HRP conjugated as the detection antibody. Range: 78.1-5000 pg/mL.



The mean Myogenin concentration was determined to be 15.4 ng/mL in C2C12 cell extract based on a 1.4 mg/mL extract load and 8.0 ng/mL in mouse skeletal muscle tissue extract based on a 1.7 mg/mL extract load.