

# IRE1/ERN1 Recombinant Matched Antibody Pair, PBS Only

Catalog Number: MP02267-1

## Capture Antibody Information

**Catalog Number:**  
82687-4-PBS  
**Host:**  
Rabbit  
**Isotype:**  
IgG  
**Purification Method:**  
Protein A purification

**Clone ID:**  
250145B3  
**Reactivity:**  
human  
**Immunogen Catalog Number:**  
Ag25580

**Conjugate:**  
Unconjugated  
**Full name:**  
endoplasmic reticulum to nucleus signaling 1  
**Gene ID:**  
2081

## Detection Antibody Information

**Catalog Number:**  
82687-3-PBS  
**Host:**  
Rabbit  
**Isotype:**  
IgG  
**Purification Method:**  
Protein A purification

**Clone ID:**  
250145G5  
**Reactivity:**  
human  
**GenBank:**  
BC130405  
**Immunogen Catalog Number:**  
Ag25580

**Conjugate:**  
Unconjugated  
**Full name:**  
endoplasmic reticulum to nucleus signaling 1  
**Gene ID:**  
2081

## Applications

**Tested Applications:**  
Sandwich ELISA

**Range:**  
0.469-30 ng/mL (Sandwich ELISA)

**Recommended Dilutions:**  
It is recommended that this reagent should be titrated in each testing system to obtain optimal results.

## Product Information

MP02267-1 targets IRE1/ERN1 in immunoassays as a matched antibody pair. Validated in Sandwich ELISA.

Capture antibody: IRE1; ERN1 Recombinant antibody, PBS Only (Capture) 82687-4-PBS (250145B3). 100 µg. Concentration 1 mg/mL.

Detection antibody: IRE1; ERN1 Recombinant antibody, PBS Only (Detector) 82687-3-PBS (250145G5). 100 µg. Concentration 1 mg/mL.

Unconjugated rabbit recombinant monoclonal antibody pair in PBS only storage buffer at a concentration of 1 mg/mL, ready for conjugation. Created using Proteintech's proprietary in-house recombinant technology. Recombinant production enables unrivalled batch-to-batch consistency, easy scale-up, and future security of supply.

Matched antibody pairs are designed for use in a variety of assays and platforms that require matched antibody pairs.

Antibody use should be optimized for each application and assay.

## Storage

**Storage:**  
Store at -80°C.  
**Storage buffer:**  
PBS only

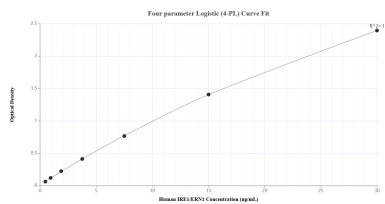
For technical support and original validation data for this product please contact:

T: 1 (888) 4PTGLAB (1-888-478-4522) (toll free in USA), or 1(312) 455-8498 (outside USA)

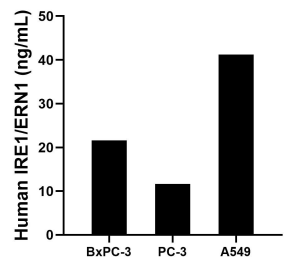
E: [proteintech@ptglab.com](mailto:proteintech@ptglab.com)  
W: [ptglab.com](http://ptglab.com)

This product is exclusively available under Proteintech Group brand and is not available to purchase from any other manufacturer.

## Selected Validation Data



Sandwich ELISA standard curve of MP02267-1, Human IRE1/ERN1 Recombinant Matched Antibody Pair - PBS only. 82687-4-PBS was coated to a plate as the capture antibody and incubated with serial dilutions of standard Ag25580. 82687-3-PBS was HRP conjugated as the detection antibody. Range: 0.469-30 ng/mL.



The mean IRE1/ERN1 concentration was determined to be 21.57 ng/mL in BxPC-3 cell extract based on a 2.00 mg/mL extract load, 11.61 ng/mL in PC-3 cell extract based on a 1.60 mg/mL extract load and 41.21 ng/mL in A549 cell extract based on a 2.40 mg/mL extract load.