

Growth Hormone Recombinant Matched Antibody Pair, PBS Only

Catalog Number: **MP02272-1**

Capture Antibody Information

Catalog Number:

82813-8-PBS

Host:

Rabbit

Isotype:

IgG

Purification Method:

Protein A purification

Clone ID:

250390C2

Reactivity:

human

Immunogen Catalog Number:

HZ-1007

Conjugate:

Unconjugated

Full name:

GH1

Gene ID:

2688

Detection Antibody Information

Catalog Number:

82813-9-PBS

Host:

Rabbit

Isotype:

IgG

Purification Method:

Protein A purification

Clone ID:

250390B5

Reactivity:

human

GenBank:

BC075012

Immunogen Catalog Number:

HZ-1007

Conjugate:

Unconjugated

Full name:

GH1

Gene ID:

2688

Applications

Tested Applications:

Sandwich ELISA

Range:

19.5-1250 pg/mL (Sandwich ELISA)

Recommended Dilutions:

It is recommended that this reagent should be titrated in each testing system to obtain optimal results.

Product Information

MP02272-1 targets Growth Hormone in immunoassays as a matched antibody pair. Validated in Sandwich ELISA.

Capture antibody: GH1 Recombinant antibody, PBS Only (Capture) 82813-8-PBS (250390C2). 100 µg. Concentration 1 mg/mL.

Detection antibody: GH1 Recombinant antibody, PBS Only (Detector) 82813-9-PBS (250390B5). 100 µg. Concentration 1 mg/mL.

Unconjugated rabbit recombinant monoclonal antibody pair in PBS only storage buffer at a concentration of 1 mg/mL, ready for conjugation. Created using Proteintech's proprietary in-house recombinant technology. Recombinant production enables unrivalled batch-to-batch consistency, easy scale-up, and future security of supply.

Matched antibody pairs are designed for use in a variety of assays and platforms that require matched antibody pairs.

Antibody use should be optimized for each application and assay.

Storage

Storage:

Store at -80°C.

Storage buffer:

PBS only

For technical support and original validation data for this product please contact:

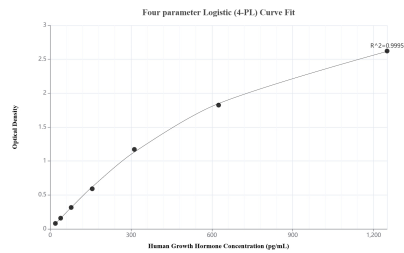
T: 1 (888) 4PTGLAB (1-888-478-4522) (toll free in USA), or 1(312) 455-8498 (outside USA)

E: proteintech@ptglab.com

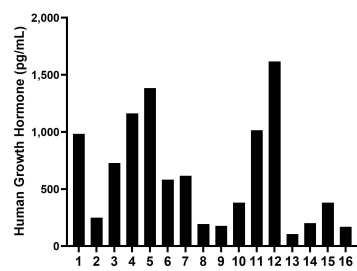
W: ptglab.com

This product is exclusively available under Proteintech Group brand and is not available to purchase from any other manufacturer.

Selected Validation Data



Sandwich ELISA standard curve of MP02272-1, Human Growth Hormone Recombinant Matched Antibody Pair - PBS only. 82813-8-PBS was coated to a plate as the capture antibody and incubated with serial dilutions of standard HZ-1007. 82813-9-PBS was HRP conjugated as the detection antibody. Range: 19.5-1250 pg/mL



Serum of sixteen individual healthy human donors was measured. The Growth Hormone concentration of detected samples was determined to be 622.3 pg/mL with a range of 106.6-1,616.6 pg/mL.