

MATN3 Recombinant Matched Antibody Pair, PBS Only

Catalog Number: **MP02278-1**

Capture Antibody Information

Catalog Number:

86125-2-PBS

Host:

Rabbit

Isotype:

IgG

Purification Method:

Protein A purification

Clone ID:

250692C3

Reactivity:

human

Immunogen Catalog Number:

Eg3136

Conjugate:

Unconjugated

Full name:

matrilin 3

Gene ID:

4148

Detection Antibody Information

Catalog Number:

86125-1-PBS

Host:

Rabbit

Isotype:

IgG

Purification Method:

Protein A purification

Clone ID:

250692C11

Reactivity:

human

GenBank:

NM_002381.4

Immunogen Catalog Number:

Eg3136

Conjugate:

Unconjugated

Full name:

matrilin 3

Gene ID:

4148

Applications

Tested Applications:

Cytometric bead array, Sandwich ELISA

Range:

0.313-40 ng/mL (Cytometric Bead Array)
0.313-20 ng/mL (Sandwich ELISA)

Recommended Dilutions:

It is recommended that this reagent should be titrated in each testing system to obtain optimal results.

Product Information

MP02278-1 targets MATN3 in immunoassays as a matched antibody pair. Validated in Cytometric bead array, Sandwich ELISA.

Capture antibody: MATN3 Recombinant antibody, PBS Only (Capture) 86125-2-PBS (250692C3). 100 µg. Concentration 1 mg/mL.

Detection antibody: MATN3 Recombinant antibody, PBS Only (Detector) 86125-1-PBS (250692C11). 100 µg. Concentration 1 mg/mL.

Unconjugated rabbit recombinant monoclonal antibody pair in PBS only storage buffer at a concentration of 1 mg/mL, ready for conjugation. Created using Proteintech's proprietary in-house recombinant technology. Recombinant production enables unrivalled batch-to-batch consistency, easy scale-up, and future security of supply.

Matched antibody pairs are designed for use in a variety of assays and platforms that require matched antibody pairs.

Antibody use should be optimized for each application and assay.

Storage

Storage:

Store at -80°C.

Storage buffer:

PBS only

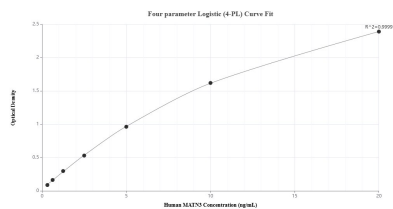
For technical support and original validation data for this product please contact:

T: 1 (888) 4PTGLAB (1-888-478-4522) (toll free in USA), or 1(312) 455-8498 (outside USA)

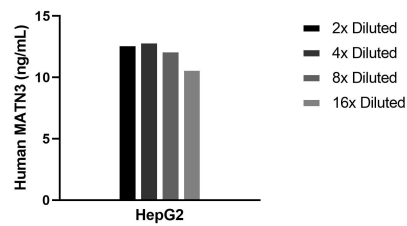
E: proteintech@ptglab.com
W: ptglab.com

This product is exclusively available under Proteintech Group brand and is not available to purchase from any other manufacturer.

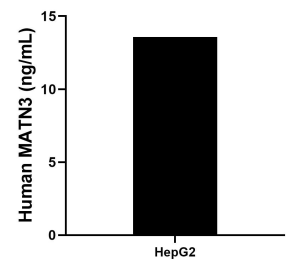
Selected Validation Data



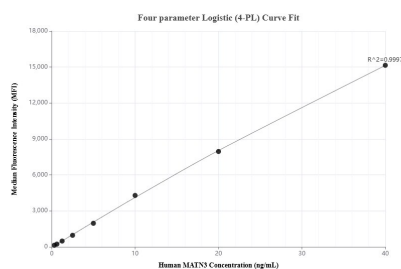
Sandwich ELISA standard curve of MP02278-1, Human MATN3 Recombinant Matched Antibody Pair - PBS only. 86125-2-PBS was coated to a plate as the capture antibody and incubated with serial dilutions of standard Eg3136. 86125-1-PBS was HRP conjugated as the detection antibody. Range: 0.313-20 ng/mL



The mean MATN3 concentration was determined to be 12.1 ng/mL in HepG2 cell extract based on a 0.9 mg/mL extract load.



The mean MATN3 concentration was determined to be 13.57 ng/mL in HepG2 cell extract based on a 0.9 mg/mL extract load.



Cytometric bead array standard curve of MP02278-1, MATN3 Recombinant Matched Antibody Pair, PBS Only. Capture antibody: 86125-2-PBS. Detection antibody: 86125-1-PBS. Standard: Eg3136. Range: 0.313-40 ng/mL