

# TGFBI/BIGH3 Recombinant Matched Antibody Pair, PBS Only

Catalog Number: **MP02279-2**

## Capture Antibody Information

**Catalog Number:**  
80805-5-PBS  
**Host:**  
Rabbit  
**Isotype:**  
IgG  
**Purification Method:**  
Protein A purification

**Clone ID:**  
243108F11  
**Reactivity:**  
human  
**Immunogen Catalog Number:**  
Eg1233

**Conjugate:**  
Unconjugated  
**Full name:**  
transforming growth factor, beta-induced, 68kDa  
**Gene ID:**  
7045

## Detection Antibody Information

**Catalog Number:**  
80805-2-PBS  
**Host:**  
Rabbit  
**Isotype:**  
IgG  
**Purification Method:**  
Protein A purification

**Clone ID:**  
243108E6  
**Reactivity:**  
human  
**GenBank:**  
NM\_000358.3  
**Immunogen Catalog Number:**  
Eg1233

**Conjugate:**  
Unconjugated  
**Full name:**  
transforming growth factor, beta-induced, 68kDa  
**Gene ID:**  
7045

## Applications

**Tested Applications:**  
Sandwich ELISA

**Range:**  
97.7-6250 pg/mL (Sandwich ELISA)

**Recommended Dilutions:**  
It is recommended that this reagent should be titrated in each testing system to obtain optimal results.

## Product Information

MP02279-2 targets TGFBI/BIGH3 in immunoassays as a matched antibody pair. Validated in Sandwich ELISA.

Capture antibody: beta IG-H3/TGFBI Recombinant antibody, PBS Only (Capture) 80805-5-PBS (243108F11). 100 µg. Concentration 1 mg/mL.

Detection antibody: beta IG-H3/TGFBI Recombinant antibody, PBS Only (Detector) 80805-2-PBS (243108E6). 100 µg. Concentration 1 mg/mL.

Unconjugated rabbit recombinant monoclonal antibody pair in PBS only storage buffer at a concentration of 1 mg/mL, ready for conjugation. Created using Proteintech's proprietary in-house recombinant technology. Recombinant production enables unrivalled batch-to-batch consistency, easy scale-up, and future security of supply.

Matched antibody pairs are designed for use in a variety of assays and platforms that require matched antibody pairs.

Antibody use should be optimized for each application and assay.

## Storage

**Storage:**  
Store at -80°C.  
**Storage buffer:**  
PBS only

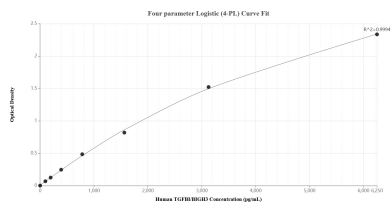
For technical support and original validation data for this product please contact:

T: 1 (888) 4PTGLAB (1-888-478-4522) (toll free in USA), or 1(312) 455-8498 (outside USA)

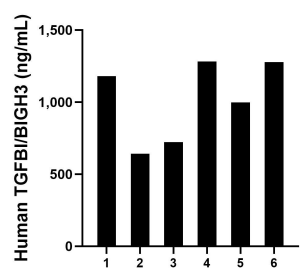
E: [proteintech@ptglab.com](mailto:proteintech@ptglab.com)  
W: [ptglab.com](http://ptglab.com)

**This product is exclusively available under Proteintech Group brand and is not available to purchase from any other manufacturer.**

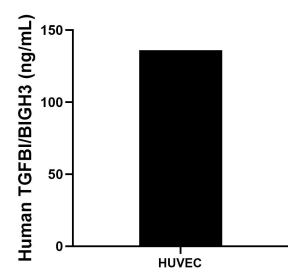
## Selected Validation Data



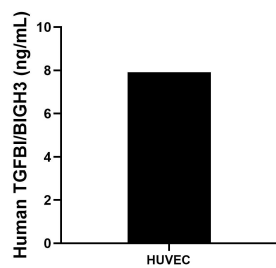
Sandwich ELISA standard curve of MP02279-2, Human TGFBI/BI GH3 Recombinant Matched Antibody Pair - PBS only. 80805-5-PBS was coated to a plate as the capture antibody and incubated with serial dilutions of standard Eg1233. 80805-2-PBS was HRP conjugated as the detection antibody. Range: 97.7-6250 pg/mL



Plasma of six individual healthy human donors was measured. The TGFBI/BI GH3 concentration of detected samples was determined to be 1,016.5 ng/mL with a range of 640.9-1,282.5 ng/mL



The mean TGFBI/BI GH3 concentration was determined to be 136.1 ng/mL in HUVEC cell extract based on a 2.2 mg/mL extract load.



HUVEC cells were cultured in DMEM supplemented with 10% fetal bovine serum, 2.5 mM L-glutamine, 100 U/mL penicillin, and 100 µg/mL streptomycin sulfate. An aliquot of the cell culture supernatant was removed, assayed for human TGFBI/BI GH3, and measured 7.9 ng/mL