

TGF beta 1 Recombinant Matched Antibody Pair, PBS Only

Catalog Number:MP02288-1

Capture Antibody Information

Catalog Number:
81746-5-PBS

Host:
Rabbit

Isotype:
IgG

Purification Method:
Protein A purification

Clone ID:
250119G3

Reactivity:
human

Immunogen Catalog Number:
Eg0879

Conjugate:
Unconjugated

Full name:
transforming growth factor, beta 1

Gene ID:
7040

Detection Antibody Information

Catalog Number:
81746-4-PBS

Host:
Rabbit

Isotype:
IgG

Purification Method:
Protein A purification

Clone ID:
250119B5

Reactivity:
human

GenBank:
Immunogen Catalog Number:
Eg0879

Conjugate:
Unconjugated

Full name:
transforming growth factor, beta 1

Gene ID:
7040

Applications

Tested Applications:
Cytometric bead array

Range:
0.781-50 ng/mL (Cytometric Bead Array)

Recommended Dilutions:
It is recommended that this reagent should be titrated in each testing system to obtain optimal results.

Product Information

MP02288-1 targets TGF beta 1 in immunoassays as a matched antibody pair. Validated in Cytometric bead array.

Capture antibody: TGFB1 Recombinant antibody, PBS Only (Capture) 81746-5-PBS (250119G3). 100 µg. Concentration 1 mg/mL.

Detection antibody: TGFB1 Recombinant antibody, PBS Only (Detector) 81746-4-PBS (250119B5). 100 µg. Concentration 1 mg/mL.

Unconjugated rabbit recombinant monoclonal antibody pair in PBS only storage buffer at a concentration of 1 mg/mL, ready for conjugation. Created using Proteintech's proprietary in-house recombinant technology. Recombinant production enables unrivalled batch-to-batch consistency, easy scale-up, and future security of supply.

Matched antibody pairs are designed for use in a variety of assays and platforms that require matched antibody pairs.

Antibody use should be optimized for each application and assay.

Storage

Storage:
Store at -80°C.
Storage buffer:
PBS only

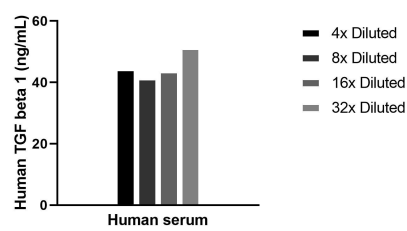
For technical support and original validation data for this product please contact:

T: 1 (888) 4PTGLAB (1-888-478-4522) (toll free in USA), or 1(312) 455-8498 (outside USA)

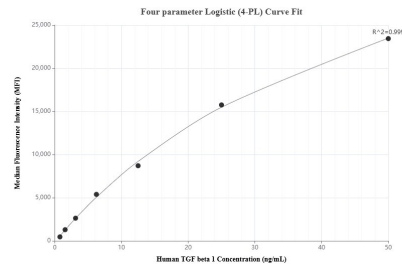
E: proteintech@ptglab.com
W: ptglab.com

This product is exclusively available under Proteintech Group brand and is not available to purchase from any other manufacturer.

Selected Validation Data



The mean TGF beta 1 concentration was determined to be 45.0 ng/mL in Acid-base activated human serum.



Cytometric bead array standard curve of MP02288-1, TGF beta 1 Recombinant Matched Antibody Pair, PBS Only. Capture antibody: 81746-5-PBS. Detection antibody: 81746-4-PBS. Standard: Eg0879. Range: 0.781-50 ng/mL.