

PRPS1 Recombinant Matched Antibody Pair, PBS Only

Catalog Number: **MP02295-1**

Capture Antibody Information

Catalog Number:
86217-2-PBS
Host:
Rabbit
Isotype:
IgG
Purification Method:
Protein A purification

Clone ID:
250201B12
Reactivity:
human
Immunogen Catalog Number:
Ag7907

Conjugate:
Unconjugated
Full name:
phosphoribosyl pyrophosphate synthetase 1
Gene ID:
5631

Detection Antibody Information

Catalog Number:
86217-1-PBS
Host:
Rabbit
Isotype:
IgG
Purification Method:
Protein A purification

Clone ID:
250201C1
Reactivity:
human
GenBank:
BC001605
Immunogen Catalog Number:
Ag7907

Conjugate:
Unconjugated
Full name:
phosphoribosyl pyrophosphate synthetase 1
Gene ID:
5631

Applications

Tested Applications:
Cytometric bead array

Range:
1.56-200 ng/mL (Cytometric Bead Array)

Recommended Dilutions:
It is recommended that this reagent should be titrated in each testing system to obtain optimal results.

Product Information

MP02295-1 targets PRPS1 in immunoassays as a matched antibody pair. Validated in Cytometric bead array.

Capture antibody: PRPS1 Recombinant antibody, PBS Only (Capture) 86217-2-PBS (250201B12). 100 µg. Concentration 1 mg/mL.

Detection antibody: PRPS1 Recombinant antibody, PBS Only (Detector) 86217-1-PBS (250201C1). 100 µg. Concentration 1 mg/mL.

Unconjugated rabbit recombinant monoclonal antibody pair in PBS only storage buffer at a concentration of 1 mg/mL, ready for conjugation. Created using Proteintech's proprietary in-house recombinant technology. Recombinant production enables unrivalled batch-to-batch consistency, easy scale-up, and future security of supply.

Matched antibody pairs are designed for use in a variety of assays and platforms that require matched antibody pairs.

Antibody use should be optimized for each application and assay.

Storage

Storage:
Store at -80°C.
Storage buffer:
PBS only

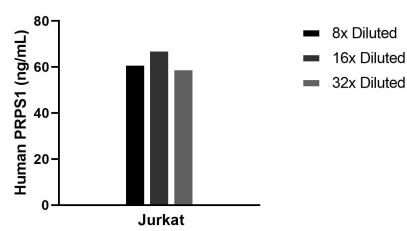
For technical support and original validation data for this product please contact:

T: 1 (888) 4PTGLAB (1-888-478-4522) (toll free in USA), or 1(312) 455-8498 (outside USA)

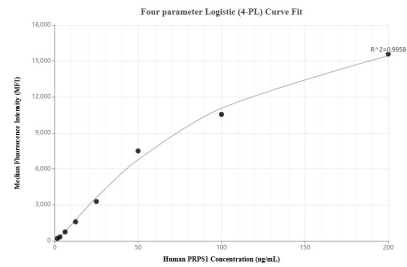
E: proteintech@ptglab.com
W: ptglab.com

This product is exclusively available under Proteintech Group brand and is not available to purchase from any other manufacturer.

Selected Validation Data



The mean PRPS1 concentration was determined to be 62.7 ng/mL in Jurkat cell extract based on a 1.2 mg/mL extract load.



Cytometric bead array standard curve of MP02295-1, PRPS1 Recombinant Matched Antibody Pair, PBS Only. Capture antibody: 86217-2-PBS. Detection antibody: 86217-1-PBS. Standard: Ag7907. Range: 1.56-200 ng/mL.