

For Research Use Only

# TORC1/CRTC1 Recombinant Matched Antibody Pair, PBS Only



Catalog Number:MP02309-1

## Capture Antibody Information

Catalog Number:  
86226-1-PBS  
Host:  
Rabbit  
Isotype:  
IgG  
Purification Method:  
Protein A purification

Clone ID:  
250870B12  
Reactivity:  
human  
Immunogen Catalog Number:  
Ag0693

Conjugate:  
Unconjugated  
Full name:  
CREB regulated transcription coactivator 1  
Gene ID:  
23373

## Detection Antibody Information

Catalog Number:  
86226-2-PBS  
Host:  
Rabbit  
Isotype:  
IgG  
Purification Method:  
Protein A purification

Clone ID:  
250870F5  
Reactivity:  
human  
GenBank:  
BC028050  
Immunogen Catalog Number:  
Ag0693

Conjugate:  
Unconjugated  
Full name:  
CREB regulated transcription coactivator 1  
Gene ID:  
23373

## Applications

Tested Applications:  
Cytometric bead array

Range:  
0.781-100 ng/mL (Cytometric Bead Array)

Recommended Dilutions:  
It is recommended that this reagent should be titrated in each testing system to obtain optimal results.

## Product Information

MP02309-1 targets TORC1/CRTC1 in immunoassays as a matched antibody pair. Validated in Cytometric bead array.

Capture antibody: TORC1 Recombinant antibody, PBS Only (Capture) 86226-1-PBS (250870B12). 100 µg. Concentration 1 mg/mL.

Detection antibody: TORC1 Recombinant antibody, PBS Only (Detector) 86226-2-PBS (250870F5). 100 µg. Concentration 1 mg/mL.

Unconjugated rabbit recombinant monoclonal antibody pair in PBS only storage buffer at a concentration of 1 mg/mL, ready for conjugation. Created using Proteintech's proprietary in-house recombinant technology. Recombinant production enables unrivalled batch-to-batch consistency, easy scale-up, and future security of supply.

Matched antibody pairs are designed for use in a variety of assays and platforms that require matched antibody pairs.

Antibody use should be optimized for each application and assay.

## Storage

Storage:  
Store at -80°C.  
Storage buffer:  
PBS only

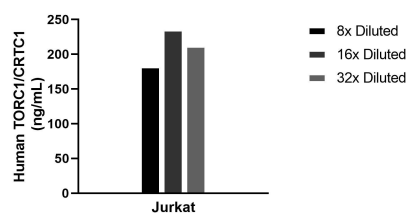
For technical support and original validation data for this product please contact:

T: 1 (888) 4PTGLAB (1-888-478-4522) (toll free in USA), or 1(312) 455-8498 (outside USA)

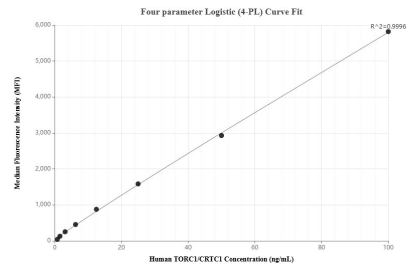
E: [proteintech@ptglab.com](mailto:proteintech@ptglab.com)  
W: [ptglab.com](http://ptglab.com)

This product is exclusively available under Proteintech Group brand and is not available to purchase from any other manufacturer.

# Selected Validation Data



The mean TORC1/CRTC1 concentration was determined to be 209.6 ng/mL in Jurkat cell extract based on a 2.2 mg/mL extract load.



Cytometric bead array standard curve of MP02309-1, TORC1/CRTC1 Recombinant Matched Antibody Pair, PBS Only. Capture antibody: 86226-1-PBS. Detection antibody: 86226-2-PBS. Standard: Ag0693. Range: 0.781-100 ng/mL.