

NPC1 Recombinant Matched Antibody Pair, PBS Only

Catalog Number: **MP02312-1**

Capture Antibody Information

Catalog Number:

86233-3-PBS

Host:

Rabbit

Isotype:

IgG

Purification Method:

Protein A purification

Clone ID:

250854C4

Reactivity:

human

Immunogen Catalog Number:

Ag4946

Conjugate:

Unconjugated

Full name:

Niemann-Pick disease, type C1

Gene ID:

4864

Detection Antibody Information

Catalog Number:

86233-2-PBS

Host:

Rabbit

Isotype:

IgG

Purification Method:

Protein A purification

Clone ID:

250854C2

Reactivity:

human

GenBank:

BC063302

Immunogen Catalog Number:

Ag4946

Conjugate:

Unconjugated

Full name:

Niemann-Pick disease, type C1

Gene ID:

4864

Applications

Tested Applications:

Cytometric bead array

Range:

0.781-100 ng/mL (Cytometric Bead Array)

Recommended Dilutions:

It is recommended that this reagent should be titrated in each testing system to obtain optimal results.

Product Information

MP02312-1 targets NPC1 in immunoassays as a matched antibody pair. Validated in Cytometric bead array.

Capture antibody: NPC1 Recombinant antibody, PBS Only (Capture) 86233-3-PBS (250854C4). 100 µg. Concentration 1 mg/mL.

Detection antibody: NPC1 Recombinant antibody, PBS Only (Detector) 86233-2-PBS (250854C2). 100 µg. Concentration 1 mg/mL.

Unconjugated rabbit recombinant monoclonal antibody pair in PBS only storage buffer at a concentration of 1 mg/mL, ready for conjugation. Created using Proteintech's proprietary in-house recombinant technology. Recombinant production enables unrivalled batch-to-batch consistency, easy scale-up, and future security of supply.

Matched antibody pairs are designed for use in a variety of assays and platforms that require matched antibody pairs.

Antibody use should be optimized for each application and assay.

Storage

Storage:

Store at -80°C.

Storage buffer:

PBS only

For technical support and original validation data for this product please contact:

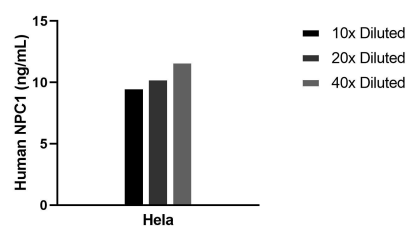
T: 1 (888) 4PTGLAB (1-888-478-4522) (toll free in USA), or 1(312) 455-8498 (outside USA)

E: proteintech@ptglab.com

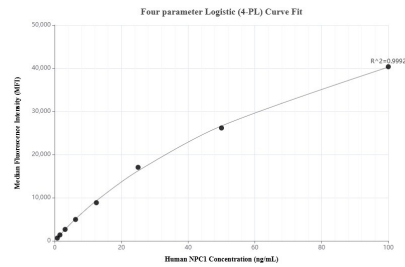
W: ptglab.com

This product is exclusively available under Proteintech Group brand and is not available to purchase from any other manufacturer.

Selected Validation Data



The mean NPC1 concentration was determined to be 10.5 ng/mL in HeLa cell extract based on a 0.9 mg/mL extract load.



Cytometric bead array standard curve of MP02312-1, NPC1 Recombinant Matched Antibody Pair, PBS Only. Capture antibody: 86233-3-PBS. Detection antibody: 86233-2-PBS. Standard: Ag4946. Range: 0.781-100 ng/mL.