

RARG Recombinant Matched Antibody Pair, PBS Only

Catalog Number: **MP02317-1**

Capture Antibody Information

Catalog Number:
86098-2-PBS

Host:
Rabbit

Isotype:
IgG

Purification Method:
Protein A purification

Clone ID:
250399B2

Reactivity:
human

Immunogen Catalog Number:
Ag1991

Conjugate:
Unconjugated

Full name:
retinoic acid receptor, gamma

Gene ID:
5916

Detection Antibody Information

Catalog Number:
86098-1-PBS

Host:
Rabbit

Isotype:
IgG

Purification Method:
Protein A purification

Clone ID:
250399C1

Reactivity:
human

GenBank:
BC019098

Immunogen Catalog Number:
Ag1991

Conjugate:
Unconjugated

Full name:
retinoic acid receptor, gamma

Gene ID:
5916

Applications

Tested Applications:
Sandwich ELISA

Range:
46.9-3000 pg/mL (Sandwich ELISA)

Recommended Dilutions:
It is recommended that this reagent should be titrated in each testing system to obtain optimal results.

Product Information

MP02317-1 targets RARG in immunoassays as a matched antibody pair. Validated in Sandwich ELISA.

Capture antibody: RARG Recombinant antibody, PBS Only (Capture) 86098-2-PBS (250399B2). 100 µg. Concentration 1 mg/mL.

Detection antibody: RARG Recombinant antibody, PBS Only (Detector) 86098-1-PBS (250399C1). 100 µg. Concentration 1 mg/mL.

Unconjugated rabbit recombinant monoclonal antibody pair in PBS only storage buffer at a concentration of 1 mg/mL, ready for conjugation. Created using Proteintech's proprietary in-house recombinant technology. Recombinant production enables unrivalled batch-to-batch consistency, easy scale-up, and future security of supply.

Matched antibody pairs are designed for use in a variety of assays and platforms that require matched antibody pairs.

Antibody use should be optimized for each application and assay.

Storage

Storage:
Store at -80°C.
Storage buffer:
PBS only

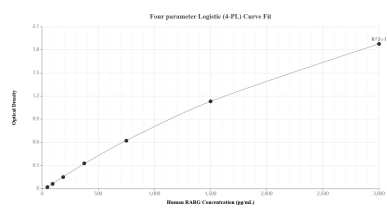
For technical support and original validation data for this product please contact:

T: 1 (888) 4PTGLAB (1-888-478-4522) (toll free in USA), or 1(312) 455-8498 (outside USA)

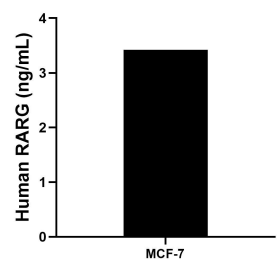
E: proteintech@ptglab.com
W: ptglab.com

This product is exclusively available under Proteintech Group brand and is not available to purchase from any other manufacturer.

Selected Validation Data



Sandwich ELISA standard curve of MP02317-1, Human RARG Recombinant Matched Antibody Pair - PBS only. 86098-2-PBS was coated to a plate as the capture antibody and incubated with serial dilutions of standard Ag1991. 86098-1-PBS was HRP conjugated as the detection antibody. Range: 46.9-3000 pg/mL.



The mean RARG concentration was determined to be 3.4 ng/mL in MCF-7 cell extract based on a 1.2 mg/mL extract load.