

For Research Use Only



Lp-PLA2 Recombinant Matched Antibody Pair, PBS Only

Catalog Number:MP02319-1

Capture Antibody Information

Catalog Number:
86271-2-PBS
Host:
Rabbit
Isotype:
IgG
Purification Method:
Protein A purification

Clone ID:
250253E1
Reactivity:
human
Immunogen Catalog Number:
Eg3756

Conjugate:
Unconjugated
Full name:
phospholipase A2, group VII (platelet-activating factor acetylhydrolase, plasma)
Gene ID:
7941

Detection Antibody Information

Catalog Number:
86271-1-PBS
Host:
Rabbit
Isotype:
IgG
Purification Method:
Protein A purification

Clone ID:
250253D12
Reactivity:
human
GenBank:
NM_005084.4
Immunogen Catalog Number:
Eg3756

Conjugate:
Unconjugated
Full name:
phospholipase A2, group VII (platelet-activating factor acetylhydrolase, plasma)
Gene ID:
7941

Applications

Tested Applications:
Cytometric bead array

Range:
0.781-100 ng/mL (Cytometric Bead Array)

Recommended Dilutions:
It is recommended that this reagent should be titrated in each testing system to obtain optimal results.

Product Information

MP02319-1 targets Lp-PLA2 in immunoassays as a matched antibody pair. Validated in Cytometric bead array.

Capture antibody: Lp-PLA2/PLA2G7 Recombinant antibody, PBS Only (Capture) 86271-2-PBS (250253E1). 100 µg. Concentration 1 mg/mL.

Detection antibody: Lp-PLA2/PLA2G7 Recombinant antibody, PBS Only (Detector) 86271-1-PBS (250253D12). 100 µg. Concentration 1 mg/mL.

Unconjugated rabbit recombinant monoclonal antibody pair in PBS only storage buffer at a concentration of 1 mg/mL, ready for conjugation. Created using Proteintech's proprietary in-house recombinant technology. Recombinant production enables unrivalled batch-to-batch consistency, easy scale-up, and future security of supply.

Matched antibody pairs are designed for use in a variety of assays and platforms that require matched antibody pairs.

Antibody use should be optimized for each application and assay.

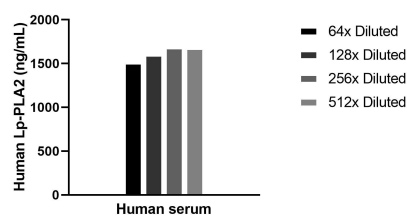
Storage

Storage:
Store at -80°C.
Storage buffer:
PBS only

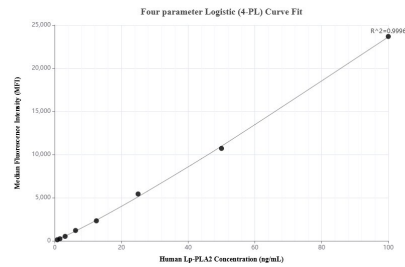
For technical support and original validation data for this product please contact:
T: 1 (888) 4PTGLAB (1-888-478-4522) (toll free in USA), or 1(312) 455-8498 (outside USA)
E: proteintech@ptglab.com
W: ptglab.com

This product is exclusively available under Proteintech Group brand and is not available to purchase from any other manufacturer.

Selected Validation Data



The mean Lp-PLA2 concentration was determined to be 1615.8 ng/mL in human serum.



Cytometric bead array standard curve of MP02319-1, Lp-PLA2 Recombinant Matched Antibody Pair, PBS Only. Capture antibody: 86271-2-PBS. Detection antibody: 86271-1-PBS. Standard: Eg3756. Range: 0.781-100 ng/mL.