

KIF2A Recombinant Matched Antibody Pair, PBS Only

Catalog Number: **MP02320-1**

Capture Antibody Information

Catalog Number:

86268-2-PBS

Host:

Rabbit

Isotype:

IgG

Purification Method:

Protein A purification

Clone ID:

250946A6

Reactivity:

human

Immunogen Catalog Number:

Ag3748

Conjugate:

Unconjugated

Full name:

kinesin heavy chain member 2A

Gene ID:

3796

Detection Antibody Information

Catalog Number:

86268-1-PBS

Host:

Rabbit

Isotype:

IgG

Purification Method:

Protein A purification

Clone ID:

250946E7

Reactivity:

human

GenBank:

BC031828

Immunogen Catalog Number:

Ag3748

Conjugate:

Unconjugated

Full name:

kinesin heavy chain member 2A

Gene ID:

3796

Applications

Tested Applications:

Cytometric bead array

Range:

0.313-40 ng/mL (Cytometric Bead Array)

Recommended Dilutions:

It is recommended that this reagent should be titrated in each testing system to obtain optimal results.

Product Information

MP02320-1 targets KIF2A in immunoassays as a matched antibody pair. Validated in Cytometric bead array.

Capture antibody: KIF2A Recombinant antibody, PBS Only (Capture) 86268-2-PBS (250946A6). 100 µg. Concentration 1 mg/mL.

Detection antibody: KIF2A Recombinant antibody, PBS Only (Detector) 86268-1-PBS (250946E7). 100 µg. Concentration 1 mg/mL.

Unconjugated rabbit recombinant monoclonal antibody pair in PBS only storage buffer at a concentration of 1 mg/mL, ready for conjugation. Created using Proteintech's proprietary in-house recombinant technology. Recombinant production enables unrivalled batch-to-batch consistency, easy scale-up, and future security of supply.

Matched antibody pairs are designed for use in a variety of assays and platforms that require matched antibody pairs.

Antibody use should be optimized for each application and assay.

Storage

Storage:

Store at -80°C.

Storage buffer:

PBS only

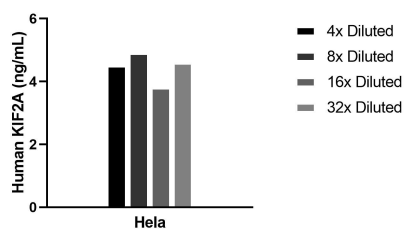
For technical support and original validation data for this product please contact:

T: 1 (888) 4PTGLAB (1-888-478-4522) (toll free in USA), or 1(312) 455-8498 (outside USA)

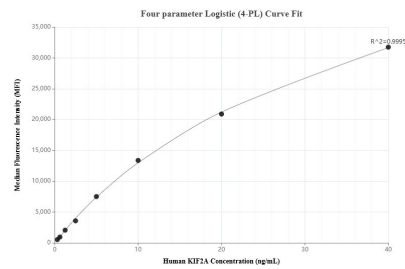
E: proteintech@ptglab.com
W: ptglab.com

This product is exclusively available under Proteintech Group brand and is not available to purchase from any other manufacturer.

Selected Validation Data



The mean KIF2A concentration was determined to be 4.4 ng/mL in HeLa cell extract based on a 0.9 mg/mL extract load.



Cytometric bead array standard curve of MP02320-1, KIF2A Recombinant Matched Antibody Pair, PBS Only. Capture antibody: 86268-2-PBS. Detection antibody: 86268-1-PBS. Standard: Ag3748. Range: 0.313-40 ng/mL.