

For Research Use Only

# LAMP2/ CD107b Recombinant Matched Antibody Pair, PBS Only



Catalog Number:MP02321-2

## Capture Antibody Information

**Catalog Number:**  
86269-5-PBS  
**Host:**  
Rabbit  
**Isotype:**  
IgG  
**Purification Method:**  
Protein A purification

**Clone ID:**  
250948G6  
**Reactivity:**  
human  
**Immunogen Catalog Number:**  
Eg4998

**Conjugate:**  
Unconjugated  
**Full name:**  
lysosomal-associated membrane protein 2  
**Gene ID:**  
3920

## Detection Antibody Information

**Catalog Number:**  
86269-4-PBS  
**Host:**  
Rabbit  
**Isotype:**  
IgG  
**Purification Method:**  
Protein A purification

**Clone ID:**  
250948E6  
**Reactivity:**  
human  
**GenBank:**  
NM\_002294.3  
**Immunogen Catalog Number:**  
Eg4998

**Conjugate:**  
Unconjugated  
**Full name:**  
lysosomal-associated membrane protein 2  
**Gene ID:**  
3920

## Applications

**Tested Applications:**  
Sandwich ELISA

**Range:**  
78.1-5000 pg/mL (Sandwich ELISA)

**Recommended Dilutions:**  
It is recommended that this reagent should be titrated in each testing system to obtain optimal results.

## Product Information

MP02321-2 targets LAMP2/ CD107b in immunoassays as a matched antibody pair. Validated in Sandwich ELISA.

Capture antibody: LAMP2/ CD107b Recombinant antibody, PBS Only (Capture) 86269-5-PBS (250948G6). 100 µg. Concentration 1 mg/mL.

Detection antibody: LAMP2/ CD107b Recombinant antibody, PBS Only (Detector) 86269-4-PBS (250948E6). 100 µg. Concentration 1 mg/mL.

Unconjugated rabbit recombinant monoclonal antibody pair in PBS only storage buffer at a concentration of 1 mg/mL, ready for conjugation. Created using Proteintech's proprietary in-house recombinant technology. Recombinant production enables unrivalled batch-to-batch consistency, easy scale-up, and future security of supply.

Matched antibody pairs are designed for use in a variety of assays and platforms that require matched antibody pairs.

Antibody use should be optimized for each application and assay.

## Storage

**Storage:**  
Store at -80°C.  
**Storage buffer:**  
PBS only

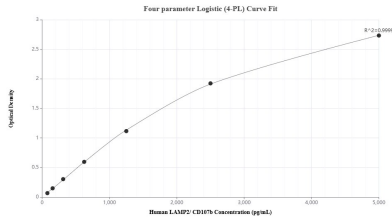
For technical support and original validation data for this product please contact:

T: 1 (888) 4PTGLAB (1-888-478-4522) (toll free in USA), or 1(312) 455-8498 (outside USA)

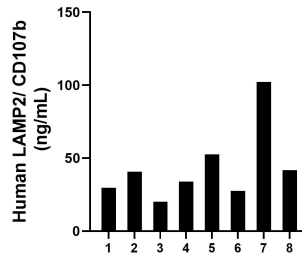
E: [proteintech@ptglab.com](mailto:proteintech@ptglab.com)  
W: [ptglab.com](http://ptglab.com)

**This product is exclusively available under Proteintech Group brand and is not available to purchase from any other manufacturer.**

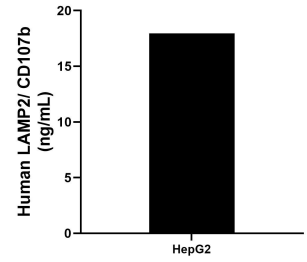
## Selected Validation Data



Sandwich ELISA standard curve of MP02321-2, Human LAMP2/ CD107b Recombinant Matched Antibody Pair - PBS only. 86269-5-PBS was coated to a plate as the capture antibody and incubated with serial dilutions of standard Eg4998. 86269-4-PBS was HRP conjugated as the detection antibody. Range: 78.1-5000 pg/mL



Plasma of eight individual healthy human donors was measured. The human LAMP2/ CD107b concentration of detected samples was determined to be 43.54 ng/mL with a range of 20.21 - 102.18 ng/mL.



The mean LAMP2/ CD107b concentration was determined to be 17.96 ng/mL in HepG2 cell extract based on a 1.3 mg/mL extract load.