

Mouse Surfactant protein D Recombinant Matched Antibody Pair, PBS Only

Catalog Number: **MP02322-1**

Capture Antibody Information

Catalog Number:
85985-1-PBS
Host:
Rabbit
Isotype:
IgG
Purification Method:
Protein A purification

Clone ID:
250571G8
Reactivity:
mouse, rat
Immunogen Catalog Number:
Eg2924

Conjugate:
Unconjugated
Full name:
surfactant associated protein D
Gene ID:
20390

Detection Antibody Information

Catalog Number:
85985-2-PBS
Host:
Rabbit
Isotype:
IgG
Purification Method:
Protein A purification

Clone ID:
250571B4
Reactivity:
mouse
GenBank:
NM_009160.2
Immunogen Catalog Number:
Eg2924

Conjugate:
Unconjugated
Full name:
surfactant associated protein D
Gene ID:
20390

Applications

Tested Applications:
Sandwich ELISA

Range:
78.1-5000 pg/mL (Sandwich ELISA)

Recommended Dilutions:
It is recommended that this reagent should be titrated in each testing system to obtain optimal results.

Product Information

MP02322-1 targets Surfactant protein D in immunoassays as a matched antibody pair. Validated in Sandwich ELISA.
Capture antibody: Mouse Surfactant protein D Recombinant antibody, PBS Only (Capture) 85985-1-PBS (250571G8). 100 µg. Concentration 1 mg/mL.

Detection antibody: Mouse Sftpd Recombinant antibody, PBS Only (Detector) 85985-2-PBS (250571B4). 100 µg. Concentration 1 mg/mL.

Unconjugated rabbit recombinant monoclonal antibody pair in PBS only storage buffer at a concentration of 1 mg/mL, ready for conjugation. Created using Proteintech's proprietary in-house recombinant technology. Recombinant production enables unrivalled batch-to-batch consistency, easy scale-up, and future security of supply.

Matched antibody pairs are designed for use in a variety of assays and platforms that require matched antibody pairs.

Antibody use should be optimized for each application and assay.

Storage

Storage:
Store at -80°C.
Storage buffer:
PBS only

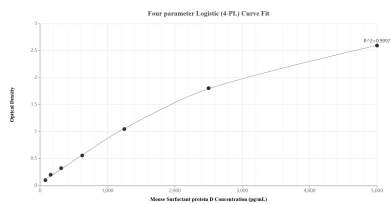
For technical support and original validation data for this product please contact:

T: 1 (888) 4PTGLAB (1-888-478-4522) (toll free in USA), or 1(312) 455-8498 (outside USA)

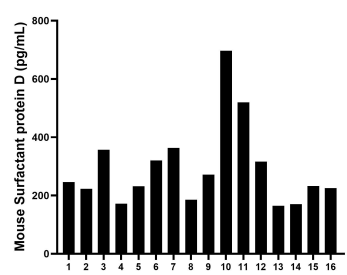
E: proteintech@ptglab.com
W: ptglab.com

This product is exclusively available under Proteintech Group brand and is not available to purchase from any other manufacturer.

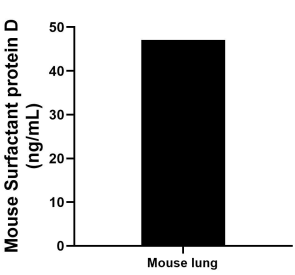
Selected Validation Data



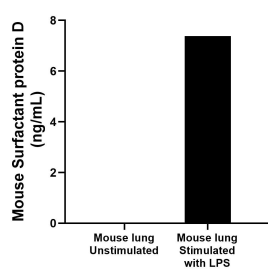
Sandwich ELISA standard curve of MP02322-1, Mouse Surfactant protein D Recombinant Matched Antibody Pair - PBS only. 85985-1-PBS was coated to a plate as the capture antibody and incubated with serial dilutions of standard Eg2924. 85985-2-PBS was HRP conjugated as the detection antibody. Range: 78.1-5000 pg/mL



Serum of sixteen mice was measured. The Surfactant protein D concentration of detected samples was determined to be 293.4 pg/mL with a range of 164.4-696.5 pg/mL.



The mean Surfactant protein D concentration was determined to be 47.1 ng/mL in mouse lung tissue extract based on a 5.3 mg/mL extract load.



Mouse lung, cut into 1-2 mm pieces, was cultured unstimulated or stimulated with 1 µg/mL LPS for 3 days. The mean Surfactant protein D concentration was undetectable in unstimulated supernatant, 7.4 ng/mL in LPS stimulated supernatant.