

For Research Use Only



# MAN1A1 Recombinant Matched Antibody Pair, PBS Only

Catalog Number:MP02326-1

## Capture Antibody Information

Catalog Number:  
86094-1-PBS  
Host:  
Rabbit  
Isotype:  
IgG  
Purification Method:  
Protein A purification

Clone ID:  
250444H2  
Reactivity:  
human  
Immunogen Catalog Number:  
Ag20060

Conjugate:  
Unconjugated  
Full name:  
mannosidase, alpha, class 1A, member 1  
Gene ID:  
4121

## Detection Antibody Information

Catalog Number:  
86094-3-PBS  
Host:  
Rabbit  
Isotype:  
IgG  
Purification Method:  
Protein A purification

Clone ID:  
250444F10  
Reactivity:  
human  
GenBank:  
BC065827  
Immunogen Catalog Number:  
Ag20060

Conjugate:  
Unconjugated  
Full name:  
mannosidase, alpha, class 1A, member 1  
Gene ID:  
4121

## Applications

Tested Applications:  
Sandwich ELISA

Range:  
78.1-5000 pg/mL (Sandwich ELISA)

Recommended Dilutions:  
It is recommended that this reagent should be titrated in each testing system to obtain optimal results.

## Product Information

MP02326-1 targets MAN1A1 in immunoassays as a matched antibody pair. Validated in Sandwich ELISA.

Capture antibody: MAN1A1 Recombinant antibody, PBS Only (Capture) 86094-1-PBS (250444H2). 100 µg. Concentration 1 mg/mL.

Detection antibody: MAN1A1 Recombinant antibody, PBS Only (Detector) 86094-3-PBS (250444F10). 100 µg. Concentration 1 mg/mL.

Unconjugated rabbit recombinant monoclonal antibody pair in PBS only storage buffer at a concentration of 1 mg/mL, ready for conjugation. Created using Proteintech's proprietary in-house recombinant technology. Recombinant production enables unrivalled batch-to-batch consistency, easy scale-up, and future security of supply.

Matched antibody pairs are designed for use in a variety of assays and platforms that require matched antibody pairs.

Antibody use should be optimized for each application and assay.

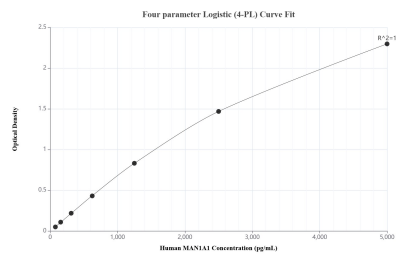
## Storage

Storage:  
Store at -80°C.  
Storage buffer:  
PBS only

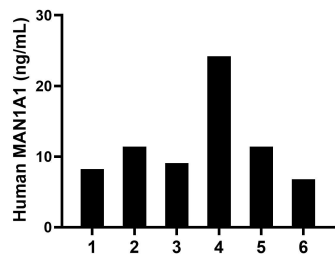
For technical support and original validation data for this product please contact:  
T: 1 (888) 4PTGLAB (1-888-478-4522) (toll free in USA), or 1(312) 455-8498 (outside USA)  
E: [proteintech@ptglab.com](mailto:proteintech@ptglab.com)  
W: [ptglab.com](http://ptglab.com)

This product is exclusively available under Proteintech Group brand and is not available to purchase from any other manufacturer.

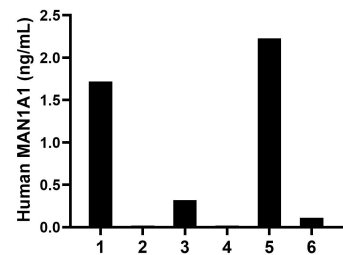
## Selected Validation Data



Sandwich ELISA standard curve of MP02326-1, Human MAN1A1 Recombinant Matched Antibody Pair - PBS only. 86094-1-PBS was coated to a plate as the capture antibody and incubated with serial dilutions of standard Ag20060. 86094-3-PBS was HRP conjugated as the detection antibody. Range: 78.1-5000 pg/mL.



Serum of six individual healthy human donors was measured. The MAN1A1 concentration of detected samples was determined to be 11.9 ng/mL with a range of 6.8-24.2 ng/mL.



Urine of six individual healthy human donors was measured. The MAN1A1 concentration of detected samples was determined to be 0.7 ng/mL with a range of ND-2.2 ng/mL.