

LRRC32 Recombinant Matched Antibody Pair, PBS Only

Catalog Number: **MP02335-1**

Capture Antibody Information

Catalog Number:
86059-2-PBS

Host:
Rabbit

Isotype:
IgG

Purification Method:
Protein A purification

Clone ID:
250611B1

Reactivity:
human

Immunogen Catalog Number:
Ag23423

Conjugate:
Unconjugated

Full name:
leucine rich repeat containing 32

Gene ID:
2615

Detection Antibody Information

Catalog Number:
86059-3-PBS

Host:
Rabbit

Isotype:
IgG

Purification Method:
Protein A purification

Clone ID:
250611H4

Reactivity:
human

GenBank:
BC070079

Immunogen Catalog Number:
Ag23423

Conjugate:
Unconjugated

Full name:
leucine rich repeat containing 32

Gene ID:
2615

Applications

Tested Applications:
Sandwich ELISA

Range:
0.156-10 ng/mL (Sandwich ELISA)

Recommended Dilutions:
It is recommended that this reagent should be titrated in each testing system to obtain optimal results.

Product Information

MP02335-1 targets LRRC32 in immunoassays as a matched antibody pair. Validated in Sandwich ELISA.

Capture antibody: LRRC32 Recombinant antibody, PBS Only (Capture) 86059-2-PBS (250611B1). 100 µg. Concentration 1 mg/mL.

Detection antibody: LRRC32 Recombinant antibody, PBS Only (Detector) 86059-3-PBS (250611H4). 100 µg. Concentration 1 mg/mL.

Unconjugated rabbit recombinant monoclonal antibody pair in PBS only storage buffer at a concentration of 1 mg/mL, ready for conjugation. Created using Proteintech's proprietary in-house recombinant technology. Recombinant production enables unrivalled batch-to-batch consistency, easy scale-up, and future security of supply.

Matched antibody pairs are designed for use in a variety of assays and platforms that require matched antibody pairs.

Antibody use should be optimized for each application and assay.

Storage

Storage:
Store at -80°C.
Storage buffer:
PBS only

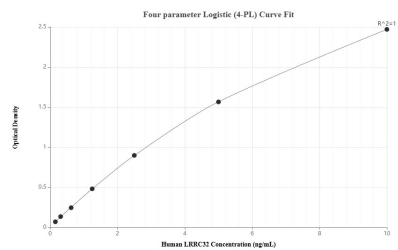
For technical support and original validation data for this product please contact:

T: 1 (888) 4PTGLAB (1-888-478-4522) (toll free in USA), or 1(312) 455-8498 (outside USA)

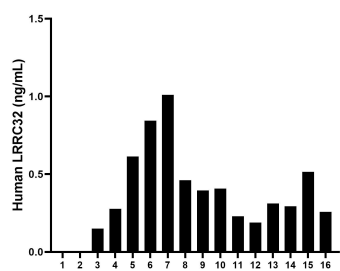
E: proteintech@ptglab.com
W: ptglab.com

This product is exclusively available under Proteintech Group brand and is not available to purchase from any other manufacturer.

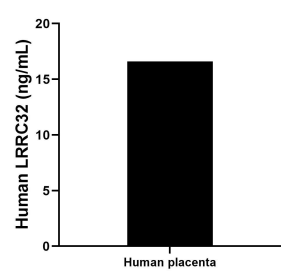
Selected Validation Data



Sandwich ELISA standard curve of MP02335-1, Human LRRC32 Recombinant Matched Antibody Pair - PBS only. 86059-2-PBS was coated to a plate as the capture antibody and incubated with serial dilutions of standard Ag23423. 86059-3-PBS was HRP conjugated as the detection antibody. Range: 0.156-10 ng/mL



Serum of sixteen individual healthy human donors was measured. The human LRRC32 concentration of detected samples was determined to be 0.37 ng/mL with a range of 0 - 1.01 ng/mL.



The mean LRRC32 concentration was determined to be 16.61 ng/mL in human placenta tissue extract based on a 3.2 mg/mL extract load.