

For Research Use Only

Rat CXCL7/Ppbp Recombinant Matched Antibody Pair, PBS Only



Catalog Number:MP02338-1

Capture Antibody Information

Catalog Number:
86222-2-PBS

Host:
Rabbit

Isotype:
IgG

Purification Method:
Protein A purification

Clone ID:
250049C3

Reactivity:
rat

Immunogen Catalog Number:
Eg3405

Conjugate:
Unconjugated

Full name:
pro-platelet basic protein (chemokine (C-X-C motif) ligand 7)

Gene ID:
246358

Detection Antibody Information

Catalog Number:
86222-1-PBS

Host:
Rabbit

Isotype:
IgG

Purification Method:
Protein A purification

Clone ID:
250049H3

Reactivity:
rat

GenBank:
NM_153721.1

Immunogen Catalog Number:
Eg3405

Conjugate:
Unconjugated

Full name:
pro-platelet basic protein (chemokine (C-X-C motif) ligand 7)

Gene ID:
246358

Applications

Tested Applications:
Sandwich ELISA

Range:
23.4-1500 pg/mL (Sandwich ELISA)

Recommended Dilutions:
It is recommended that this reagent should be titrated in each testing system to obtain optimal results.

Product Information

MP02338-1 targets CXCL7/Ppbp in immunoassays as a matched antibody pair. Validated in Sandwich ELISA.

Capture antibody: Rat CXCL7/Thymus Chemokine-1 Recombinant antibody, PBS Only (Capture) 86222-2-PBS (250049C3). 100 µg. Concentration 1 mg/mL.

Detection antibody: Rat CXCL7/Thymus Chemokine-1 Recombinant antibody, PBS Only (Detector) 86222-1-PBS (250049H3). 100 µg. Concentration 1 mg/mL.

Unconjugated rabbit recombinant monoclonal antibody pair in PBS only storage buffer at a concentration of 1 mg/mL, ready for conjugation. Created using Proteintech's proprietary in-house recombinant technology. Recombinant production enables unrivalled batch-to-batch consistency, easy scale-up, and future security of supply.

Matched antibody pairs are designed for use in a variety of assays and platforms that require matched antibody pairs.

Antibody use should be optimized for each application and assay.

Storage

Storage:
Store at -80°C.
Storage buffer:
PBS only

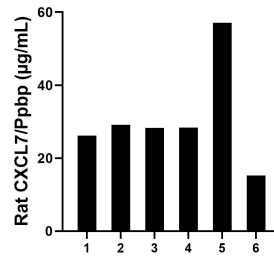
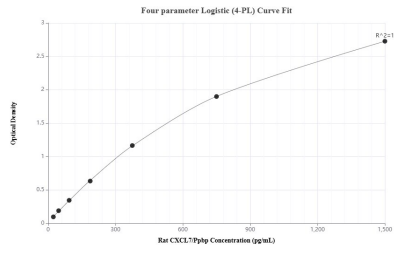
For technical support and original validation data for this product please contact:

T: 1 (888) 4PTGLAB (1-888-478-4522) (toll free in USA), or 1(312) 455-8498 (outside USA)

E: proteintech@ptglab.com
W: ptglab.com

This product is exclusively available under Proteintech Group brand and is not available to purchase from any other manufacturer.

Selected Validation Data



Sandwich ELISA standard curve of MP02338-1, Rat CXCL7/Ppbp Recombinant Matched Antibody Pair - PBS only. 86222-2-PBS was coated to a plate as the capture antibody and incubated with serial dilutions of standard Eg3405. 86222-1-PBS was HRP conjugated as the detection antibody. Range: 23.4-1500 µg/mL

Serum of six rats was measured. The rat CXCL7/Ppbp concentration of detected samples was determined to be 30.70 µg/mL with a range of 15.27 - 57.05 µg/mL.