

RPS3A Recombinant Matched Antibody Pair, PBS Only

Catalog Number: **MP02339-1**

Capture Antibody Information

Catalog Number:

86254-2-PBS

Host:

Rabbit

Isotype:

IgG

Purification Method:

Protein A purification

Clone ID:

251033F2

Reactivity:

human

Immunogen Catalog Number:

Ag5273

Conjugate:

Unconjugated

Full name:

ribosomal protein S3A

Gene ID:

6189

Detection Antibody Information

Catalog Number:

86254-1-PBS

Host:

Rabbit

Isotype:

IgG

Purification Method:

Protein A purification

Clone ID:

251033G5

Reactivity:

human

GenBank:

BC066926

Immunogen Catalog Number:

Ag5273

Conjugate:

Unconjugated

Full name:

ribosomal protein S3A

Gene ID:

6189

Applications

Tested Applications:

Cytometric bead array

Range:

0.625-40 ng/mL (Cytometric Bead Array)

Recommended Dilutions:

It is recommended that this reagent should be titrated in each testing system to obtain optimal results.

Product Information

MP02339-1 targets RPS3A in immunoassays as a matched antibody pair. Validated in Cytometric bead array.

Capture antibody: RPS3A Recombinant antibody, PBS Only (Capture) 86254-2-PBS (251033F2). 100 µg. Concentration 1 mg/mL.

Detection antibody: RPS3A Recombinant antibody, PBS Only (Detector) 86254-1-PBS (251033G5). 100 µg. Concentration 1 mg/mL.

Unconjugated rabbit recombinant monoclonal antibody pair in PBS only storage buffer at a concentration of 1 mg/mL, ready for conjugation. Created using Proteintech's proprietary in-house recombinant technology. Recombinant production enables unrivalled batch-to-batch consistency, easy scale-up, and future security of supply.

Matched antibody pairs are designed for use in a variety of assays and platforms that require matched antibody pairs.

Antibody use should be optimized for each application and assay.

Storage

Storage:

Store at -80°C.

Storage buffer:

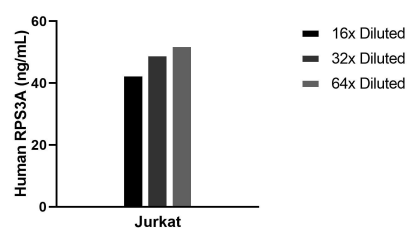
PBS only

For technical support and original validation data for this product please contact:

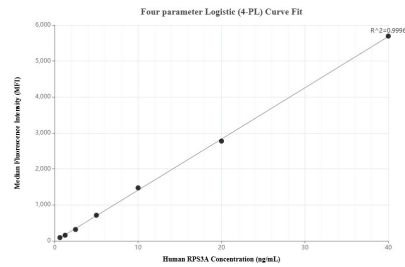
T: 1 (888) 4PTGLAB (1-888-478-4522) (toll free in USA), or 1(312) 455-8498 (outside USA)

E: proteintech@ptglab.com
W: ptglab.com**This product is exclusively available under Proteintech Group brand and is not available to purchase from any other manufacturer.**

Selected Validation Data



The mean RPS3A concentration was determined to be 48.1 ng/mL in Jurkat cell extract based on a 1.2 mg/mL extract load.



Cytometric bead array standard curve of MP02339-1, RPS3A Recombinant Matched Antibody Pair, PBS Only. Capture antibody: 86254-2-PBS. Detection antibody: 86254-1-PBS. Standard: Ag5273. Range: 0.625-40 ng/mL.