

CUGBP1 Recombinant Matched Antibody Pair, PBS Only

Catalog Number: **MP02347-2**

Capture Antibody Information

Catalog Number:
86227-6-PBS
Host:
Rabbit
Isotype:
IgG
Purification Method:
Protein A purification

Clone ID:
250200A9
Reactivity:
human
Immunogen Catalog Number:
Ag3677

Conjugate:
Unconjugated
Full name:
CUG triplet repeat, RNA binding protein 1
Gene ID:
10658

Detection Antibody Information

Catalog Number:
86227-5-PBS
Host:
Rabbit
Isotype:
IgG
Purification Method:
Protein A purification

Clone ID:
250200A12
Reactivity:
human
GenBank:
BC031079
Immunogen Catalog Number:
Ag3677

Conjugate:
Unconjugated
Full name:
CUG triplet repeat, RNA binding protein 1
Gene ID:
10658

Applications

Tested Applications:
Sandwich ELISA

Range:
78.1-5000 pg/mL (Sandwich ELISA)

Recommended Dilutions:
It is recommended that this reagent should be titrated in each testing system to obtain optimal results.

Product Information

MP02347-2 targets CUGBP1 in immunoassays as a matched antibody pair. Validated in Sandwich ELISA.

Capture antibody: CUGBP1 Recombinant antibody, PBS Only (Capture) 86227-6-PBS (250200A9). 100 µg. Concentration 1 mg/mL.

Detection antibody: CUGBP1 Recombinant antibody, PBS Only (Detector) 86227-5-PBS (250200A12). 100 µg. Concentration 1 mg/mL.

Unconjugated rabbit recombinant monoclonal antibody pair in PBS only storage buffer at a concentration of 1 mg/mL, ready for conjugation. Created using Proteintech's proprietary in-house recombinant technology. Recombinant production enables unrivalled batch-to-batch consistency, easy scale-up, and future security of supply.

Matched antibody pairs are designed for use in a variety of assays and platforms that require matched antibody pairs.

Antibody use should be optimized for each application and assay.

Storage

Storage:
Store at -80°C.
Storage buffer:
PBS only

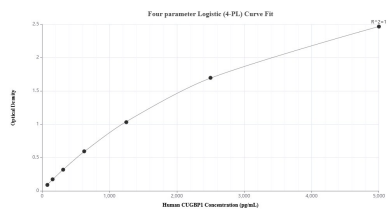
For technical support and original validation data for this product please contact:

T: 1 (888) 4PTGLAB (1-888-478-4522) (toll free in USA), or 1(312) 455-8498 (outside USA)

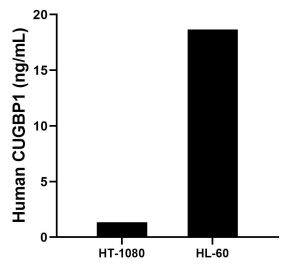
E: proteintech@ptglab.com
W: ptglab.com

This product is exclusively available under Proteintech Group brand and is not available to purchase from any other manufacturer.

Selected Validation Data



Sandwich ELISA standard curve of MP02347-2, Human CUGBP1 Recombinant Matched Antibody Pair - PBS only. 86227-6-PBS was coated to a plate as the capture antibody and incubated with serial dilutions of standard Ag3677. 86227-5-PBS was HRP conjugated as the detection antibody. Range: 78.1-5000 pg/mL



The mean CUGBP1 concentration was determined to be 1.35 ng/mL in HT-1080 cell extract based on a 1.4 mg/mL extract load and 18.67 ng/mL in HL-60 cell extract based on a 3.7 mg/mL extract load.