

For Research Use Only



ATP6V1C1 Recombinant Matched Antibody Pair, PBS Only

Catalog Number:MP02350-1

Capture Antibody Information

Catalog Number:
86345-2-PBS
Host:
Rabbit
Isotype:
IgG
Purification Method:
Protein A purification

Clone ID:
250958C3
Reactivity:
human
Immunogen Catalog Number:
Ag9020

Conjugate:
Unconjugated
Full name:
ATPase, H⁺ transporting, lysosomal
42kDa, V1 subunit C1
Gene ID:
528

Detection Antibody Information

Catalog Number:
86345-1-PBS
Host:
Rabbit
Isotype:
IgG
Purification Method:
Protein A purification

Clone ID:
250958E9
Reactivity:
human
GenBank:
BC010960
Immunogen Catalog Number:
Ag9020

Conjugate:
Unconjugated
Full name:
ATPase, H⁺ transporting, lysosomal
42kDa, V1 subunit C1
Gene ID:
528

Applications

Tested Applications:
Cytometric bead array

Range:
1.562-200 ng/mL (Cytometric Bead Array)

Recommended Dilutions:
It is recommended that this reagent should be titrated in each testing system to obtain optimal results.

Product Information

MP02350-1 targets ATP6V1C1 in immunoassays as a matched antibody pair. Validated in Cytometric bead array.

Capture antibody: ATP6V1C1 Recombinant antibody, PBS Only (Capture) 86345-2-PBS (250958C3). 100 µg. Concentration 1 mg/mL.

Detection antibody: ATP6V1C1 Recombinant antibody, PBS Only (Detector) 86345-1-PBS (250958E9). 100 µg. Concentration 1 mg/mL.

Unconjugated rabbit recombinant monoclonal antibody pair in PBS only storage buffer at a concentration of 1 mg/mL, ready for conjugation. Created using Proteintech's proprietary in-house recombinant technology. Recombinant production enables unrivalled batch-to-batch consistency, easy scale-up, and future security of supply.

Matched antibody pairs are designed for use in a variety of assays and platforms that require matched antibody pairs.

Antibody use should be optimized for each application and assay.

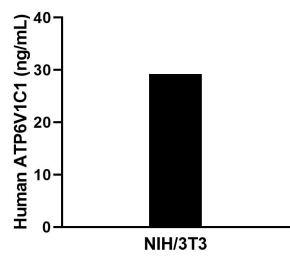
Storage

Storage:
Store at -80°C.
Storage buffer:
PBS only

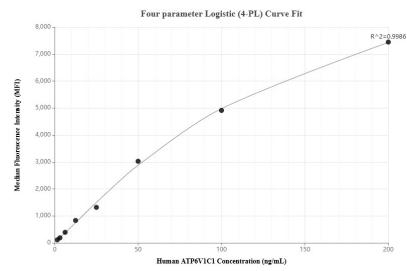
For technical support and original validation data for this product please contact:
T: 1 (888) 4PTGLAB (1-888-478-4522) (toll free in USA), or 1(312) 455-8498 (outside USA)
E: proteintech@ptglab.com
W: ptglab.com

This product is exclusively available under Proteintech Group brand and is not available to purchase from any other manufacturer.

Selected Validation Data



The mean ATP6V1C1 concentration was determined to be 29.6 ng/mL in NIH/3T3 cell extract based on a 1.4 mg/mL extract load.



Cytometric bead array standard curve of MP02350-1, ATP6V1C1 Recombinant Matched Antibody Pair, PBS Only. Capture antibody: 86345-2-PBS. Detection antibody: 86345-1-PBS. Standard: Ag9020. Range: 1.562-200 ng/mL.