

Mouse L1CAM Recombinant Matched Antibody Pair, PBS Only

Catalog Number: **MP02352-1**

Capture Antibody Information

Catalog Number:

86305-2-PBS

Host:

Rabbit

Isotype:

IgG

Purification Method:

Protein A purification

Clone ID:

250101C11

Reactivity:

mouse, rat

Immunogen Catalog Number:

Eg3022

Conjugate:

Unconjugated

Full name:

L1 cell adhesion molecule

Gene ID:

16728

Detection Antibody Information

Catalog Number:

86305-3-PBS

Host:

Rabbit

Isotype:

IgG

Purification Method:

Protein A purification

Clone ID:

250101A12

Reactivity:

mouse

GenBank:

N/A

Immunogen Catalog Number:

Eg3022

Conjugate:

Unconjugated

Full name:

L1 cell adhesion molecule

Gene ID:

16728

Applications

Tested Applications:

Cytometric bead array

Range:

0.781-100 ng/mL (Cytometric Bead Array)

Recommended Dilutions:

It is recommended that this reagent should be titrated in each testing system to obtain optimal results.

Product Information

MP02352-1 targets L1CAM in immunoassays as a matched antibody pair. Validated in Cytometric bead array.

Capture antibody: Mouse L1CAM/CD171 Recombinant monoclonal antibody, PBS Only (Capture) 86305-2-PBS (250101C11). 100 µg. Concentration 1 mg/mL.

Detection antibody: Mouse L1cam Recombinant monoclonal antibody, PBS Only (Detector) 86305-3-PBS (250101A12). 100 µg. Concentration 1 mg/mL.

Unconjugated rabbit recombinant monoclonal antibody pair in PBS only storage buffer at a concentration of 1 mg/mL, ready for conjugation. Created using Proteintech's proprietary in-house recombinant technology. Recombinant production enables unrivalled batch-to-batch consistency, easy scale-up, and future security of supply.

Matched antibody pairs are designed for use in a variety of assays and platforms that require matched antibody pairs.

Antibody use should be optimized for each application and assay.

Storage

Storage:

Store at -80°C.

Storage buffer:

PBS only

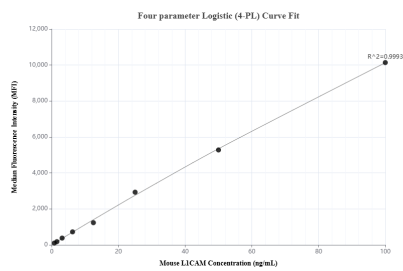
For technical support and original validation data for this product please contact:

T: 1 (888) 4PTGLAB (1-888-478-4522) (toll free in USA), or 1(312) 455-8498 (outside USA)

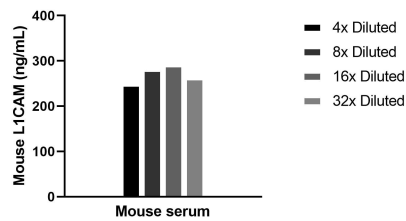
E: proteintech@ptglab.com
W: ptglab.com

This product is exclusively available under Proteintech Group brand and is not available to purchase from any other manufacturer.

Selected Validation Data



Cytometric bead array standard curve of MP02352-1, MOUSE L1CAM Recombinant Matched Antibody Pair, PBS Only. Capture antibody: 86305-2-PBS. Detection antibody: 86305-3-PBS. Standard: Eg3022. Range: 0.781-100 ng/mL.



The mean L1CAM concentration was determined to be 269.5 ng/mL in mouse serum.