

LY75/DEC-205 Recombinant Matched Antibody Pair, PBS Only

Catalog Number: **MP02358-2**

Capture Antibody Information

Catalog Number:

86342-4-PBS

Host:

Rabbit

Isotype:

IgG

Purification Method:

Protein A purification

Clone ID:

250076F1

Reactivity:

human

Immunogen Catalog Number:

Eg3439

Conjugate:

Unconjugated

Full name:

lymphocyte antigen 75

Gene ID:

4065

Detection Antibody Information

Catalog Number:

86342-5-PBS

Host:

Rabbit

Isotype:

IgG

Purification Method:

Protein A purification

Clone ID:

250076G5

Reactivity:

human

GenBank:

NM_002349.4

Immunogen Catalog Number:

Eg3439

Conjugate:

Unconjugated

Full name:

lymphocyte antigen 75

Gene ID:

4065

Applications

Tested Applications:

Sandwich ELISA

Range:

0.195–12.5 ng/mL (Sandwich ELISA)

Recommended Dilutions:

It is recommended that this reagent should be titrated in each testing system to obtain optimal results.

Product Information

MP02358-2 targets LY75/DEC-205 in immunoassays as a matched antibody pair. Validated in Sandwich ELISA.

Capture antibody: LY75/CD205 Recombinant antibody, PBS Only (Capture) 86342-4-PBS (250076F1). 100 µg. Concentration 1 mg/mL.

Detection antibody: LY75/CD205 Recombinant antibody, PBS Only (Detector) 86342-5-PBS (250076G5). 100 µg. Concentration 1 mg/mL.

Unconjugated rabbit recombinant monoclonal antibody pair in PBS only storage buffer at a concentration of 1 mg/mL, ready for conjugation. Created using Proteintech's proprietary in-house recombinant technology. Recombinant production enables unrivalled batch-to-batch consistency, easy scale-up, and future security of supply.

Matched antibody pairs are designed for use in a variety of assays and platforms that require matched antibody pairs.

Antibody use should be optimized for each application and assay.

Storage

Storage:

Store at -80°C.

Storage buffer:

PBS only

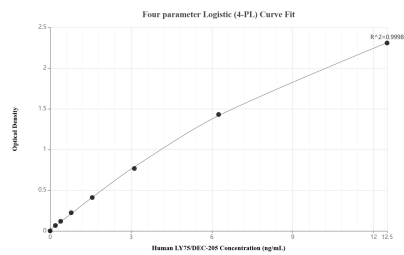
For technical support and original validation data for this product please contact:

T: 1 (888) 4PTGLAB (1-888-478-4522) (toll free
in USA), or 1(312) 455-8498 (outside USA)

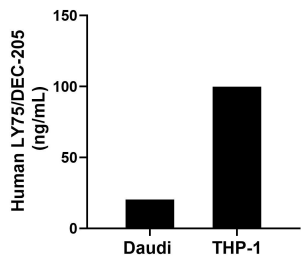
E: proteintech@ptglab.com
W: ptglab.com

This product is exclusively available under Proteintech Group brand and is not available to purchase from any other manufacturer.

Selected Validation Data



Sandwich ELISA standard curve of MP02358-2, Human LY75/DEC-205 Recombinant Matched Antibody Pair - PBS only. 86342-4-PBS was coated to a plate as the capture antibody and incubated with serial dilutions of standard Eg3439. 86342-5-PBS was HRP conjugated as the detection antibody. Range: 0.195-12.5 ng/mL



The mean LY75/DEC-205 concentration was determined to be 20.40 ng/mL in Daudi cell extract based on a 1.10 mg/mL extract load and 99.83 ng/mL in THP-1 cell extract based on a 1.20 mg/mL extract load.