

IL-13RA2 Recombinant Matched Antibody Pair, PBS Only

Catalog Number: **MP02369-2**

Capture Antibody Information

Catalog Number:
86298-3-PBS

Host:
Rabbit

Isotype:
IgG

Purification Method:
Protein A purification

Clone ID:
250952D9

Reactivity:
human

Immunogen Catalog Number:
Eg2579

Conjugate:
Unconjugated

Full name:
interleukin 13 receptor, alpha 2

Gene ID:
3598

Detection Antibody Information

Catalog Number:
86298-1-PBS

Host:
Rabbit

Isotype:
IgG

Purification Method:
Protein A purification

Clone ID:
250952G5

Reactivity:
human

GenBank:
BC020739

Immunogen Catalog Number:
Eg2579

Conjugate:
Unconjugated

Full name:
interleukin 13 receptor, alpha 2

Gene ID:
3598

Applications

Tested Applications:
Sandwich ELISA

Range:
78.1-5000 pg/mL (Sandwich ELISA)

Recommended Dilutions:
It is recommended that this reagent should be titrated in each testing system to obtain optimal results.

Product Information

MP02369-2 targets IL-13RA2 in immunoassays as a matched antibody pair. Validated in Sandwich ELISA.

Capture antibody: IL13RA2,CD213A2 Recombinant antibody, PBS Only (Capture) 86298-3-PBS (250952D9). 100 µg. Concentration 1 mg/mL.

Detection antibody: IL13RA2,CD213A2 Recombinant antibody, PBS Only (Detector) 86298-1-PBS (250952G5). 100 µg. Concentration 1 mg/mL.

Unconjugated rabbit recombinant monoclonal antibody pair in PBS only storage buffer at a concentration of 1 mg/mL, ready for conjugation. Created using Proteintech's proprietary in-house recombinant technology. Recombinant production enables unrivalled batch-to-batch consistency, easy scale-up, and future security of supply.

Matched antibody pairs are designed for use in a variety of assays and platforms that require matched antibody pairs.

Antibody use should be optimized for each application and assay.

Storage

Storage:
Store at -80°C.
Storage buffer:
PBS only

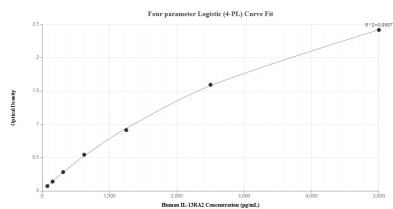
For technical support and original validation data for this product please contact:

T: 1 (888) 4PTGLAB (1-888-478-4522) (toll free in USA), or 1(312) 455-8498 (outside USA)

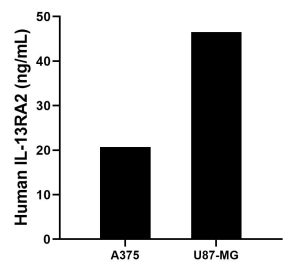
E: proteintech@ptglab.com
W: ptglab.com

This product is exclusively available under Proteintech Group brand and is not available to purchase from any other manufacturer.

Selected Validation Data



Sandwich ELISA standard curve of MP02369-2, Human IL-13RA2 Recombinant Matched Antibody Pair - PBS only. 86298-3-PBS was coated to a plate as the capture antibody and incubated with serial dilutions of standard Eg2579. 86298-1-PBS was HRP conjugated as the detection antibody. Range: 78.1-5000 pg/mL



A375 cells and U87-MG cells were cultured in DMEM supplemented with 10% fetal bovine serum, 2.5 mM L-glutamine, 100 U/mL penicillin, and 100 µg/mL streptomycin sulfate. An aliquot of the cell culture supernatants was removed, assayed for human IL-13RA2, and measured 20.73 and 46.54 ng/mL respectively.