

ALDH4A1 Recombinant Matched Antibody Pair, PBS Only

Catalog Number: **MP02370-1**

Capture Antibody Information

Catalog Number:
86297-2-PBS
Host:
Rabbit
Isotype:
IgG
Purification Method:
Protein A purification

Clone ID:
250957C11
Reactivity:
human
Immunogen Catalog Number:
Ag2147

Conjugate:
Unconjugated
Full name:
aldehyde dehydrogenase 4 family, member A1
Gene ID:
8659

Detection Antibody Information

Catalog Number:
86297-1-PBS
Host:
Rabbit
Isotype:
IgG
Purification Method:
Protein A purification

Clone ID:
250957F8
Reactivity:
human
GenBank:
BC023600
Immunogen Catalog Number:
Ag2147

Conjugate:
Unconjugated
Full name:
aldehyde dehydrogenase 4 family, member A1
Gene ID:
8659

Applications

Tested Applications:
Cytometric bead array

Range:
0.312-40 ng/mL (Cytometric Bead Array)

Recommended Dilutions:
It is recommended that this reagent should be titrated in each testing system to obtain optimal results.

Product Information

MP02370-1 targets ALDH4A1 in immunoassays as a matched antibody pair. Validated in Cytometric bead array.

Capture antibody: ALDH4A1 Recombinant antibody, PBS Only (Capture) 86297-2-PBS (250957C11). 100 µg. Concentration 1 mg/mL.

Detection antibody: ALDH4A1 Recombinant antibody, PBS Only (Detector) 86297-1-PBS (250957F8). 100 µg. Concentration 1 mg/mL.

Unconjugated rabbit recombinant monoclonal antibody pair in PBS only storage buffer at a concentration of 1 mg/mL, ready for conjugation. Created using Proteintech's proprietary in-house recombinant technology. Recombinant production enables unrivalled batch-to-batch consistency, easy scale-up, and future security of supply.

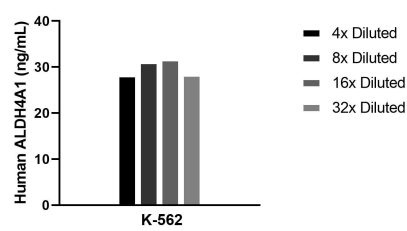
Matched antibody pairs are designed for use in a variety of assays and platforms that require matched antibody pairs.

Antibody use should be optimized for each application and assay.

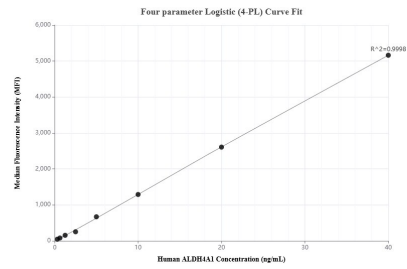
Storage

Storage:
Store at -80°C.
Storage buffer:
PBS only

Selected Validation Data



The mean ALDH4A1 concentration was determined to be 29.8 ng/mL in K-562 cell extract based on a 3.0 mg/mL extract load.



Cytometric bead array standard curve of MP02370-1, ALDH4A1 Recombinant Matched Antibody Pair, PBS Only. Capture antibody: 86297-2-PBS. Detection antibody: 86297-1-PBS. Standard: Ag2147. Range: 0.312-40 ng/mL.