

For Research Use Only

OXR1 Recombinant Matched Antibody Pair, PBS Only



Catalog Number:MP02376-1

Capture Antibody Information

Catalog Number:
86359-2-PBS

Host:
Rabbit

Isotype:
IgG

Purification Method:
Protein A purification

Clone ID:
251027G2

Reactivity:
human

Immunogen Catalog Number:
Ag4439

Conjugate:
Unconjugated

Full name:
oxidation resistance 1

Gene ID:
55074

Detection Antibody Information

Catalog Number:
86359-1-PBS

Host:
Rabbit

Isotype:
IgG

Purification Method:
Protein A purification

Clone ID:
251027G6

Reactivity:
human

GenBank:
BC032710

Immunogen Catalog Number:
Ag4439

Conjugate:
Unconjugated

Full name:
oxidation resistance 1

Gene ID:
55074

Applications

Tested Applications:
Cytometric bead array, Sandwich ELISA

Range:
0.781-50 ng/mL (Cytometric Bead Array)
78.1-2500 pg/mL (Sandwich ELISA)

Recommended Dilutions:
It is recommended that this reagent should be titrated in each testing system to obtain optimal results.

Product Information

MP02376-1 targets OXR1 in immunoassays as a matched antibody pair. Validated in Cytometric bead array, Sandwich ELISA.

Capture antibody: OXR1 Recombinant antibody, PBS Only (Capture) 86359-2-PBS (251027G2). 100 µg. Concentration 1 mg/mL.

Detection antibody: OXR1 Recombinant antibody, PBS Only (Detector) 86359-1-PBS (251027G6). 100 µg. Concentration 1 mg/mL.

Unconjugated rabbit recombinant monoclonal antibody pair in PBS only storage buffer at a concentration of 1 mg/mL, ready for conjugation. Created using Proteintech's proprietary in-house recombinant technology. Recombinant production enables unrivalled batch-to-batch consistency, easy scale-up, and future security of supply.

Matched antibody pairs are designed for use in a variety of assays and platforms that require matched antibody pairs.

Antibody use should be optimized for each application and assay.

Storage

Storage:
Store at -80°C.
Storage buffer:
PBS only

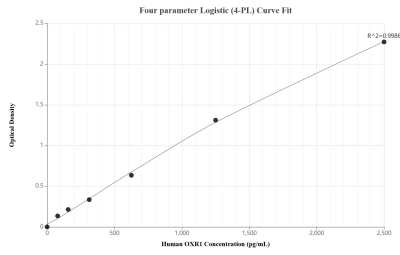
For technical support and original validation data for this product please contact:

T: 1 (888) 4PTGLAB (1-888-478-4522) (toll free in USA), or 1(312) 455-8498 (outside USA)

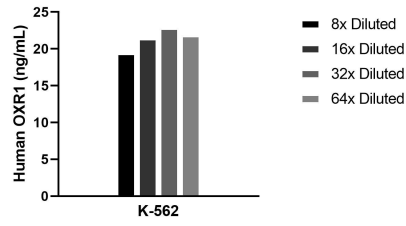
E: proteintech@ptglab.com
W: ptglab.com

This product is exclusively available under Proteintech Group brand and is not available to purchase from any other manufacturer.

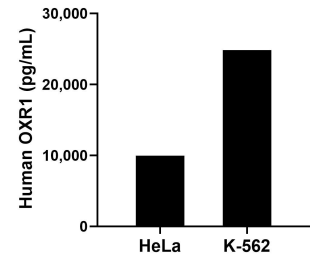
Selected Validation Data



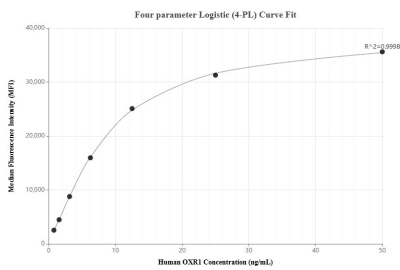
Sandwich ELISA standard curve of MP02376-1, Human OXR1 Recombinant Matched Antibody Pair - PBS only. 86359-2-PBS was coated to a plate as the capture antibody and incubated with serial dilutions of standard Ag4439. 86359-1-PBS was HRP conjugated as the detection antibody. Range: 78.1-2500 pg/mL



The mean OXR1 concentration was determined to be 21.4 ng/mL in K-562 cell extract based on a 3.0 mg/mL extract load.



The mean OXR1 concentration was determined to be 9,942.9 ng/mL in HeLa cell extract based on a 1.2 mg/mL extract load and 24,819.9 ng/mL in K-562 cell extract based on a 1.2 mg/mL extract load.



Cytometric bead array standard curve of MP02376-1, OXR1 Recombinant Matched Antibody Pair, PBS Only. Capture antibody: 86359-2-PBS. Detection antibody: 86359-1-PBS. Standard: Ag4439. Range: 0.781-50 ng/mL