

For Research Use Only

# OXR1 Recombinant Matched Antibody Pair, PBS Only



Catalog Number:MP02376-2

## Capture Antibody Information

Catalog Number:  
86359-2-PBS

Host:  
Rabbit

Isotype:  
IgG

Purification Method:  
Protein A purification

Clone ID:  
251027G2

Reactivity:  
human

Immunogen Catalog Number:  
Ag4439

Conjugate:  
Unconjugated

Full name:  
oxidation resistance 1

Gene ID:  
55074

## Detection Antibody Information

Catalog Number:  
86359-3-PBS

Host:  
Rabbit

Isotype:  
IgG

Purification Method:  
Protein A purification

Clone ID:  
251027B10

Reactivity:  
human, mouse, rat

GenBank:  
BC032710

Immunogen Catalog Number:  
Ag4439

Conjugate:  
Unconjugated

Full name:  
oxidation resistance 1

Gene ID:  
55074

## Applications

Tested Applications:  
Sandwich ELISA

Range:  
15.6-1000 pg/mL (Sandwich ELISA)

Recommended Dilutions:  
It is recommended that this reagent should be titrated in each testing system to obtain optimal results.

## Product Information

MP02376-2 targets OXR1 in immunoassays as a matched antibody pair. Validated in Sandwich ELISA.

Capture antibody: OXR1 Recombinant monoclonal antibody, PBS Only (Capture) 86359-2-PBS (251027G2). 100 µg. Concentration 1 mg/mL.

Detection antibody: OXR1 Recombinant monoclonal antibody, PBS Only (Detector) 86359-3-PBS (251027B10). 100 µg. Concentration 1 mg/mL.

Unconjugated rabbit recombinant monoclonal antibody pair in PBS only storage buffer at a concentration of 1 mg/mL, ready for conjugation. Created using Proteintech's proprietary in-house recombinant technology. Recombinant production enables unrivalled batch-to-batch consistency, easy scale-up, and future security of supply.

Matched antibody pairs are designed for use in a variety of assays and platforms that require matched antibody pairs.

Antibody use should be optimized for each application and assay.

## Storage

Storage:  
Store at -80°C.  
Storage buffer:  
PBS only

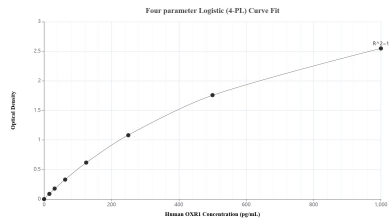
For technical support and original validation data for this product please contact:

T: 1 (888) 4PTGLAB (1-888-478-4522) (toll free in USA), or 1(312) 455-8498 (outside USA)

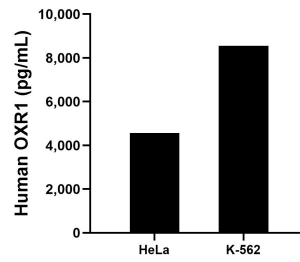
E: [proteintech@ptglab.com](mailto:proteintech@ptglab.com)  
W: [ptglab.com](http://ptglab.com)

**This product is exclusively available under Proteintech Group brand and is not available to purchase from any other manufacturer.**

## Selected Validation Data



Sandwich ELISA standard curve of MP02376-2, Human OXR1 Recombinant Matched Antibody Pair - PBS only. 86359-2-PBS was coated to a plate as the capture antibody and incubated with serial dilutions of standard Ag4439. 86359-3-PBS was HRP conjugated as the detection antibody. Range: 15.6-1000 pg/mL



The mean OXR1 concentration was determined to be 4,564.2 pg/mL in HeLa cell extract based on a 1.2 mg/mL extract load and 8,560.2 pg/mL in K-562 cell extract based on a 1.2 mg/mL extract load.