

SNAI2/SLUG Recombinant Matched Antibody Pair, PBS Only

Catalog Number: **MP02396-1**

Capture Antibody Information

Catalog Number:

82755-5-PBS

Host:

Rabbit

Isotype:

IgG

Purification Method:

Protein A purification

Clone ID:

250290H8

Reactivity:

human

Immunogen Catalog Number:

Ag2773

Conjugate:

Unconjugated

Full name:

snail homolog 2 (Drosophila)

Gene ID:

6591

Detection Antibody Information

Catalog Number:

82755-4-PBS

Host:

Rabbit

Isotype:

IgG

Purification Method:

Protein A purification

Clone ID:

250290E3

Reactivity:

human

GenBank:

BC015895

Immunogen Catalog Number:

Ag2773

Conjugate:

Unconjugated

Full name:

snail homolog 2 (Drosophila)

Gene ID:

6591

Applications

Tested Applications:

Sandwich ELISA

Range:

0.78-50 ng/mL (Sandwich ELISA)

Recommended Dilutions:

It is recommended that this reagent should be titrated in each testing system to obtain optimal results.

Product Information

MP02396-1 targets SNAI2/SLUG in immunoassays as a matched antibody pair. Validated in Sandwich ELISA.

Capture antibody: SNAI2 Recombinant antibody, PBS Only (Capture) 82755-5-PBS (250290H8). 100 µg. Concentration 1 mg/mL.

Detection antibody: SNAI2 Recombinant antibody, PBS Only (Detector) 82755-4-PBS (250290E3). 100 µg. Concentration 1 mg/mL.

Unconjugated rabbit recombinant monoclonal antibody pair in PBS only storage buffer at a concentration of 1 mg/mL, ready for conjugation. Created using Proteintech's proprietary in-house recombinant technology. Recombinant production enables unrivalled batch-to-batch consistency, easy scale-up, and future security of supply.

Matched antibody pairs are designed for use in a variety of assays and platforms that require matched antibody pairs.

Antibody use should be optimized for each application and assay.

Storage

Storage:

Store at -80°C.

Storage buffer:

PBS only

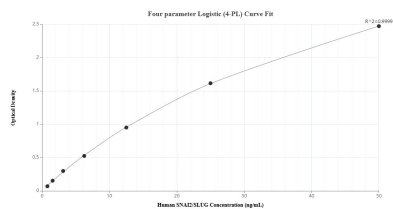
For technical support and original validation data for this product please contact:

T: 1 (888) 4PTGLAB (1-888-478-4522) (toll free in USA), or 1(312) 455-8498 (outside USA)

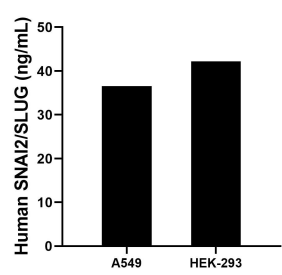
E: proteintech@ptglab.com
W: ptglab.com

This product is exclusively available under Proteintech Group brand and is not available to purchase from any other manufacturer.

Selected Validation Data



Sandwich ELISA standard curve of MP02396-1, Human SNAI2/SLUG Recombinant Matched Antibody Pair - PBS only. 82755-5-PBS was coated to a plate as the capture antibody and incubated with serial dilutions of standard Ag2773. 82755-4-PBS was HRP conjugated as the detection antibody. Range: 0.78-50 ng/mL



The mean SNAI2/SLUG concentration was determined to be 36.56 ng/mL in A549 cell extract based on a 1.2 mg/mL extract load and 42.23 ng/mL in HEK-293 cell extract based on a 2.2 mg/mL extract load.