

# GRAMD1B Recombinant Matched Antibody Pair, PBS Only

Catalog Number: **MP02407-1**

## Capture Antibody Information

**Catalog Number:**

86185-1-PBS

**Host:**

Rabbit

**Isotype:**

IgG

**Purification Method:**

Protein A purification

**Clone ID:**

250789G5

**Reactivity:**

human

**Immunogen Catalog Number:**

Ag20670

**Conjugate:**

Unconjugated

**Full name:**

GRAM domain containing 1B

**Gene ID:**

57476

## Detection Antibody Information

**Catalog Number:**

86185-2-PBS

**Host:**

Rabbit

**Isotype:**

IgG

**Purification Method:**

Protein A purification

**Clone ID:**

250789B11

**Reactivity:**

human

**GenBank:**

BC107480

**Immunogen Catalog Number:**

Ag20670

**Conjugate:**

Unconjugated

**Full name:**

GRAM domain containing 1B

**Gene ID:**

57476

## Applications

**Tested Applications:**

Cytometric bead array

**Range:**

0.469-60 ng/mL (Cytometric Bead Array)

**Recommended Dilutions:**

It is recommended that this reagent should be titrated in each testing system to obtain optimal results.

## Product Information

MP02407-1 targets GRAMD1B in immunoassays as a matched antibody pair. Validated in Cytometric bead array.

Capture antibody: GRAMD1B Recombinant antibody, PBS Only (Capture) 86185-1-PBS (250789G5). 100 µg. Concentration 1 mg/mL.

Detection antibody: GRAMD1B Recombinant antibody, PBS Only (Detector) 86185-2-PBS (250789B11). 100 µg. Concentration 1 mg/mL.

Unconjugated rabbit recombinant monoclonal antibody pair in PBS only storage buffer at a concentration of 1 mg/mL, ready for conjugation. Created using Proteintech's proprietary in-house recombinant technology. Recombinant production enables unrivalled batch-to-batch consistency, easy scale-up, and future security of supply.

Matched antibody pairs are designed for use in a variety of assays and platforms that require matched antibody pairs.

Antibody use should be optimized for each application and assay.

## Storage

**Storage:**

Store at -80°C.

**Storage buffer:**

PBS only

For technical support and original validation data for this product please contact:

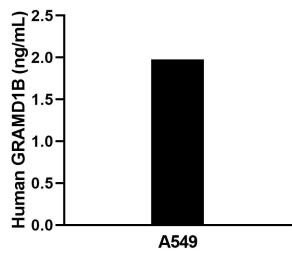
T: 1 (888) 4PTGLAB (1-888-478-4522) (toll free in USA), or 1(312) 455-8498 (outside USA)

E: [proteintech@ptglab.com](mailto:proteintech@ptglab.com)

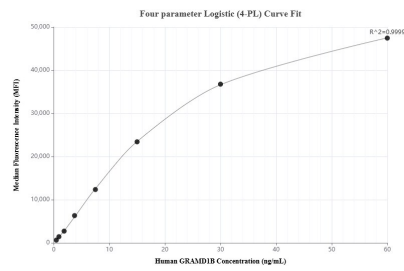
W: [ptglab.com](http://ptglab.com)

**This product is exclusively available under Proteintech Group brand and is not available to purchase from any other manufacturer.**

## Selected Validation Data



The mean GRAMD1B concentration was determined to be 2.0 ng/mL in A549 cell extract based on a 1.2 mg/mL extract load.



Cytometric bead array standard curve of MP02407-1, GRAMD1B Recombinant Matched Antibody Pair, PBS Only. Capture antibody: 86185-1-PBS. Detection antibody: 86185-2-PBS. Standard: Ag20670. Range: 0.469-60 ng/mL.