

GDF8/Myostatin Recombinant Matched Antibody Pair, PBS Only

Catalog Number: **MP02424-1**

Capture Antibody Information

Catalog Number:

86408-1-PBS

Host:

Rabbit

Isotype:

IgG

Purification Method:

Protein A purification

Clone ID:

250547A4

Reactivity:

human

Immunogen Catalog Number:

Eg1972

Conjugate:

Unconjugated

Full name:

myostatin

Gene ID:

2660

Detection Antibody Information

Catalog Number:

86408-2-PBS

Host:

Rabbit

Isotype:

IgG

Purification Method:

Protein A purification

Clone ID:

250547D4

Reactivity:

human

GenBank:

BC074757

Immunogen Catalog Number:

Eg1972

Conjugate:

Unconjugated

Full name:

myostatin

Gene ID:

2660

Applications

Tested Applications:

Cytometric bead array, Sandwich ELISA

Range:3.125-200 ng/mL (Cytometric Bead Array)
0.156-10 ng/mL (Sandwich ELISA)**Recommended Dilutions:**

It is recommended that this reagent should be titrated in each testing system to obtain optimal results.

Product Information

MP02424-1 targets GDF8/Myostatin in immunoassays as a matched antibody pair. Validated in Cytometric bead array, Sandwich ELISA.

Capture antibody: MSTN Recombinant monoclonal antibody, PBS Only (Capture) 86408-1-PBS (250547A4). 100 µg. Concentration 1 mg/mL.

Detection antibody: MSTN Recombinant monoclonal antibody, PBS Only (Detector) 86408-2-PBS (250547D4). 100 µg. Concentration 1 mg/mL.

Unconjugated rabbit recombinant monoclonal antibody pair in PBS only storage buffer at a concentration of 1 mg/mL, ready for conjugation. Created using Proteintech's proprietary in-house recombinant technology. Recombinant production enables unrivalled batch-to-batch consistency, easy scale-up, and future security of supply.

Matched antibody pairs are designed for use in a variety of assays and platforms that require matched antibody pairs.

Antibody use should be optimized for each application and assay.

Storage

Storage:

Store at -80°C.

Storage buffer:

PBS only

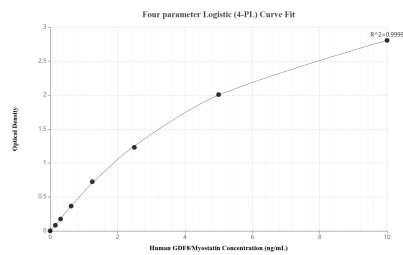
For technical support and original validation data for this product please contact:

T: 1 (888) 4PTGLAB (1-888-478-4522) (toll free in USA), or 1(312) 455-8498 (outside USA)

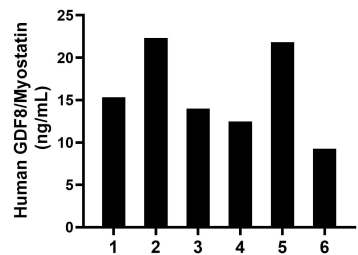
E: proteintech@ptglab.com
W: ptglab.com

This product is exclusively available under Proteintech Group brand and is not available to purchase from any other manufacturer.

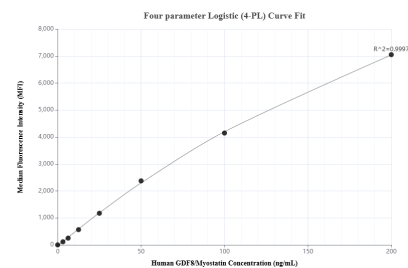
Selected Validation Data



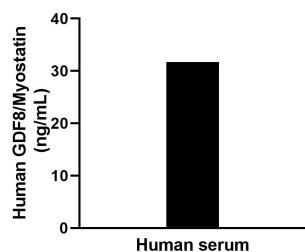
Sandwich ELISA standard curve of MP02424-1, Human GDF8/Myostatin Recombinant Matched Antibody Pair - PBS only. 86408-1-PBS was coated to a plate as the capture antibody and incubated with serial dilutions of standard Eg1972. 86408-2-PBS was HRP conjugated as the detection antibody. Range: 0.156-10 ng/mL



Plasma of six individual healthy human donors was measured. The GDF8/Myostatin concentration of detected samples was determined to be 15.87 ng/mL with a range of 9.27-22.32 ng/mL



Cytometric bead array standard curve of MP02424-1, GDF8/Myostatin Recombinant Matched Antibody Pair, PBS Only. Capture antibody: 86408-1-PBS. Detection antibody: 86408-2-PBS. Standard: Eg1972. Range: 3.125-200 ng/mL



The mean GDF8/Myostatin concentration was determined to be 32.1 ng/mL in human serum.