

DLK1 Recombinant Matched Antibody Pair, PBS Only

Catalog Number: **MP02426-2**

Capture Antibody Information

Catalog Number:

86410-3-PBS

Host:

Rabbit

Isotype:

IgG

Purification Method:

Protein A purification

Clone ID:

250840A9

Reactivity:

human

Immunogen Catalog Number:

Eg2909

Conjugate:

Unconjugated

Full name:

delta-like 1 homolog (Drosophila)

Gene ID:

8788

Detection Antibody Information

Catalog Number:

86410-4-PBS

Host:

Rabbit

Isotype:

IgG

Purification Method:

Protein A purification

Clone ID:

250840C6

Reactivity:

human

GenBank:

NM_003836.6

Immunogen Catalog Number:

Eg2909

Conjugate:

Unconjugated

Full name:

delta-like 1 homolog (Drosophila)

Gene ID:

8788

Applications

Tested Applications:

Sandwich ELISA

Range:

97.7-6250 pg/mL (Sandwich ELISA)

Recommended Dilutions:

It is recommended that this reagent should be titrated in each testing system to obtain optimal results.

Product Information

MP02426-2 targets DLK1 in immunoassays as a matched antibody pair. Validated in Sandwich ELISA.

Capture antibody: DLK1 Recombinant antibody, PBS Only (Capture) 86410-3-PBS (250840A9). 100 µg. Concentration 1 mg/mL.

Detection antibody: DLK1 Recombinant antibody, PBS Only (Detector) 86410-4-PBS (250840C6). 100 µg. Concentration 1 mg/mL.

Unconjugated rabbit recombinant monoclonal antibody pair in PBS only storage buffer at a concentration of 1 mg/mL, ready for conjugation. Created using Proteintech's proprietary in-house recombinant technology. Recombinant production enables unrivalled batch-to-batch consistency, easy scale-up, and future security of supply.

Matched antibody pairs are designed for use in a variety of assays and platforms that require matched antibody pairs.

Antibody use should be optimized for each application and assay.

Storage

Storage:

Store at -80°C.

Storage buffer:

PBS only

For technical support and original validation data for this product please contact:

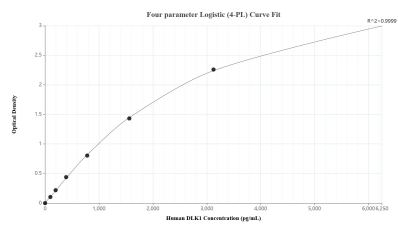
T: 1 (888) 4PTGLAB (1-888-478-4522) (toll free in USA), or 1(312) 455-8498 (outside USA)

E: proteintech@ptglab.com

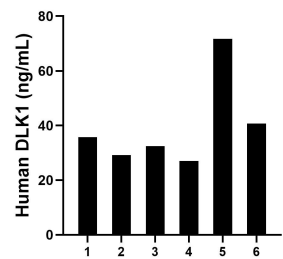
W: ptglab.com

This product is exclusively available under Proteintech Group brand and is not available to purchase from any other manufacturer.

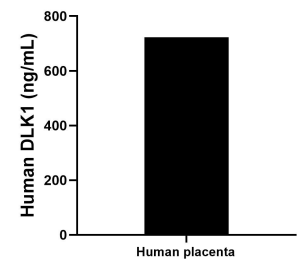
Selected Validation Data



Sandwich ELISA standard curve of MP02426-2, Human DLK1 Recombinant Matched Antibody Pair - PBS only. 86410-3-PBS was coated to a plate as the capture antibody and incubated with serial dilutions of standard Eg2909. 86410-4-PBS was HRP conjugated as the detection antibody. Range: 97.7-6250 pg/mL



Plasma of six individual healthy human donors was measured. The DLK1 concentration of detected samples was determined to be 39.48 ng/mL with a range of 27.08-71.70 ng/mL.



The mean DLK1 concentration was determined to be 722.26 ng/mL in human placenta tissue extract based on a 3.80 mg/mL extract load.