

CD31 Recombinant Matched Antibody Pair, PBS Only

Catalog Number: **MP02437-1**

Capture Antibody Information

Catalog Number:
80773-3-PBS
Host:
Rabbit
Isotype:
IgG
Purification Method:
Protein A purification

Clone ID:
251101B7
Reactivity:
human
Immunogen Catalog Number:
Eg4658

Conjugate:
Unconjugated
Full name:
platelet/endothelial cell adhesion molecule
Gene ID:
5175

Detection Antibody Information

Catalog Number:
80773-2-PBS
Host:
Rabbit
Isotype:
IgG
Purification Method:
Protein A purification

Clone ID:
251101E2
Reactivity:
human
GenBank:
NM_000442.5
Immunogen Catalog Number:
Eg4658

Conjugate:
Unconjugated
Full name:
platelet/endothelial cell adhesion molecule
Gene ID:
5175

Applications

Tested Applications:
Cytometric bead array

Range:
0.312-40 ng/mL (Cytometric Bead Array)

Recommended Dilutions:
It is recommended that this reagent should be titrated in each testing system to obtain optimal results.

Product Information

MP02437-1 targets CD31 in immunoassays as a matched antibody pair. Validated in Cytometric bead array.

Capture antibody: CD31/PECAM-1 Recombinant antibody, PBS Only (Capture) 80773-3-PBS (251101B7). 100 µg. Concentration 1 mg/mL.

Detection antibody: CD31/PECAM-1 Recombinant antibody, PBS Only (Detector) 80773-2-PBS (251101E2). 100 µg. Concentration 1 mg/mL.

Unconjugated rabbit recombinant monoclonal antibody pair in PBS only storage buffer at a concentration of 1 mg/mL, ready for conjugation. Created using Proteintech's proprietary in-house recombinant technology. Recombinant production enables unrivalled batch-to-batch consistency, easy scale-up, and future security of supply.

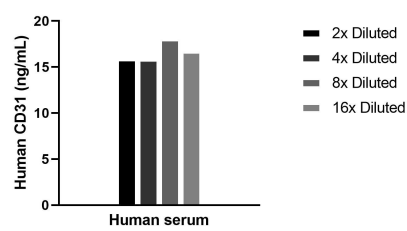
Matched antibody pairs are designed for use in a variety of assays and platforms that require matched antibody pairs.

Antibody use should be optimized for each application and assay.

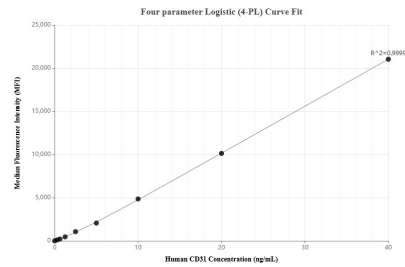
Storage

Storage:
Store at -80°C.
Storage buffer:
PBS only

Selected Validation Data



The mean CD31 concentration was determined to be 16.6 ng/mL in human serum.



Cytometric bead array standard curve of MP02437-1, CD31 Recombinant Matched Antibody Pair, PBS Only. Capture antibody: 80773-3-PBS. Detection antibody: 80773-2-PBS. Standard: Eg4658. Range: 0.312-40 ng/mL.