

# CD31 Recombinant Matched Antibody Pair, PBS Only

Catalog Number: **MP02437-2**

## Capture Antibody Information

**Catalog Number:**  
80773-6-PBS  
**Host:**  
Rabbit  
**Isotype:**  
IgG  
**Purification Method:**  
Protein A purification

**Clone ID:**  
251101A10  
**Reactivity:**  
human  
**Immunogen Catalog Number:**  
Eg4658

**Conjugate:**  
Unconjugated  
**Full name:**  
platelet/endothelial cell adhesion molecule  
**Gene ID:**  
5175

## Detection Antibody Information

**Catalog Number:**  
80773-5-PBS  
**Host:**  
Rabbit  
**Isotype:**  
IgG  
**Purification Method:**  
Protein A purification

**Clone ID:**  
251101D11  
**Reactivity:**  
human  
**GenBank:**  
NM\_000442.5  
**Immunogen Catalog Number:**  
Eg4658

**Conjugate:**  
Unconjugated  
**Full name:**  
platelet/endothelial cell adhesion molecule  
**Gene ID:**  
5175

## Applications

**Tested Applications:**  
Sandwich ELISA

**Range:**  
0.313-20 ng/mL (Sandwich ELISA)

**Recommended Dilutions:**  
It is recommended that this reagent should be titrated in each testing system to obtain optimal results.

## Product Information

MP02437-2 targets CD31 in immunoassays as a matched antibody pair. Validated in Sandwich ELISA.

Capture antibody: CD31/PECAM-1 Recombinant antibody, PBS Only (Capture) 80773-6-PBS (251101A10). 100 µg. Concentration 1 mg/mL.

Detection antibody: CD31/PECAM-1 Recombinant antibody, PBS Only (Detector) 80773-5-PBS (251101D11). 100 µg. Concentration 1 mg/mL.

Unconjugated rabbit recombinant monoclonal antibody pair in PBS only storage buffer at a concentration of 1 mg/mL, ready for conjugation. Created using Proteintech's proprietary in-house recombinant technology. Recombinant production enables unrivalled batch-to-batch consistency, easy scale-up, and future security of supply.

Matched antibody pairs are designed for use in a variety of assays and platforms that require matched antibody pairs.

Antibody use should be optimized for each application and assay.

## Storage

**Storage:**  
Store at -80°C.  
**Storage buffer:**  
PBS only

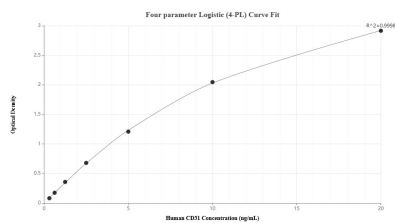
For technical support and original validation data for this product please contact:

T: 1 (888) 4PTGLAB (1-888-478-4522) (toll free in USA), or 1(312) 455-8498 (outside USA)

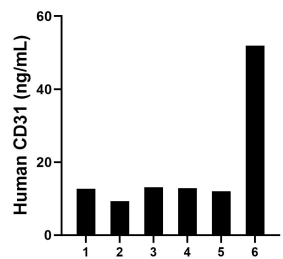
E: [proteintech@ptglab.com](mailto:proteintech@ptglab.com)  
W: [ptglab.com](http://ptglab.com)

**This product is exclusively available under Proteintech Group brand and is not available to purchase from any other manufacturer.**

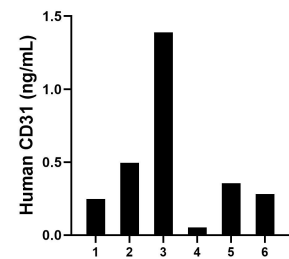
## Selected Validation Data



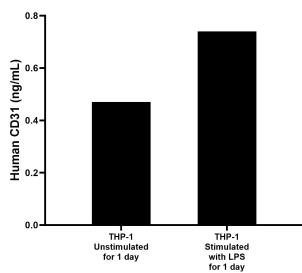
Sandwich ELISA standard curve of MP02437-2, Human CD31 Recombinant Matched Antibody Pair - PBS only. 80773-6-PBS was coated to a plate as the capture antibody and incubated with serial dilutions of standard Eg4658. 80773-5-PBS was HRP conjugated as the detection antibody. Range: 0.313-20 ng/mL



Plasma of six individual healthy human donors was measured. The human CD31 concentration of detected samples was determined to be 18.66 ng/mL with a range of 9.29 - 51.94 ng/mL.



Urine of six individual healthy human donors was measured. The human CD31 concentration of detected samples was determined to be 0.47 ng/mL with a range of 0.05 - 1.39 ng/mL.



THP-1 cells ( $3 \times 10^6$  cells/mL) were cultured in RPMI with 10% fetal bovine serum, 50  $\mu$ M  $\beta$ -mercaptoethanol, 2 mM L-glutamine, 100 U/mL penicillin, and 100  $\mu$ g/mL streptomycin sulfate. The cells were cultured unstimulated or stimulated with 1  $\mu$ g/mL LPS for 1 day. Aliquots of the cell culture supernatants were removed, assayed for levels of CD31, measured 0.47 ng/mL and 0.74 ng/mL respectively.