

For Research Use Only



HSP60 Recombinant Matched Antibody Pair, PBS Only

Catalog Number:MP02453-1

Capture Antibody Information

Catalog Number:
86275-3-PBS
Host:
Rabbit
Isotype:
IgG
Purification Method:
Protein A purification

Clone ID:
250248B2
Reactivity:
human
Immunogen Catalog Number:
Ag7401

Conjugate:
Unconjugated
Full name:
heat shock 60kDa protein 1 (chaperonin)
Gene ID:
3329

Detection Antibody Information

Catalog Number:
86275-2-PBS
Host:
Rabbit
Isotype:
IgG
Purification Method:
Protein A purification

Clone ID:
250248D10
Reactivity:
human
GenBank:
BC003030
Immunogen Catalog Number:
Ag7401

Conjugate:
Unconjugated
Full name:
heat shock 60kDa protein 1 (chaperonin)
Gene ID:
3329

Applications

Tested Applications:
Sandwich ELISA

Range:
0.156-10 ng/mL (Sandwich ELISA)

Recommended Dilutions:
It is recommended that this reagent should be titrated in each testing system to obtain optimal results.

Product Information

MP02453-1 targets HSP60 in immunoassays as a matched antibody pair. Validated in Sandwich ELISA.

Capture antibody: HSPD1 Recombinant antibody, PBS Only (Capture) 86275-3-PBS (250248B2). 100 µg. Concentration 1 mg/mL.

Detection antibody: HSPD1 Recombinant antibody, PBS Only (Detector) 86275-2-PBS (250248D10). 100 µg. Concentration 1 mg/mL.

Unconjugated rabbit recombinant monoclonal antibody pair in PBS only storage buffer at a concentration of 1 mg/mL, ready for conjugation. Created using Proteintech's proprietary in-house recombinant technology. Recombinant production enables unrivalled batch-to-batch consistency, easy scale-up, and future security of supply.

Matched antibody pairs are designed for use in a variety of assays and platforms that require matched antibody pairs.

Antibody use should be optimized for each application and assay.

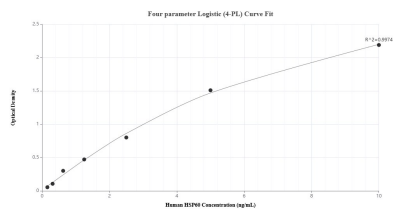
Storage

Storage:
Store at -80°C.
Storage buffer:
PBS only

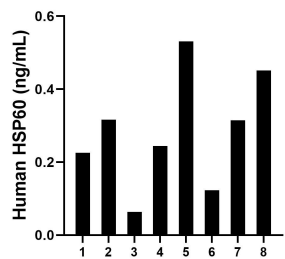
For technical support and original validation data for this product please contact:
T: 1 (888) 4PTGLAB (1-888-478-4522) (toll free in USA), or 1(312) 455-8498 (outside USA)
E: proteintech@ptglab.com
W: ptglab.com

This product is exclusively available under Proteintech Group brand and is not available to purchase from any other manufacturer.

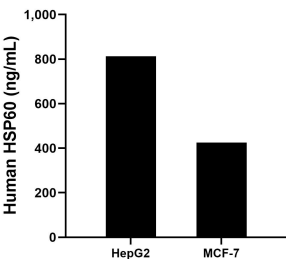
Selected Validation Data



Sandwich ELISA standard curve of MP02453-1, Human HSP60 Recombinant Matched Antibody Pair - PBS only. 86275-3-PBS was coated to a plate as the capture antibody and incubated with serial dilutions of standard Ag7401. 86275-2-PBS was HRP conjugated as the detection antibody. Range: 0.156-10 ng/mL



Plasma of eight individual healthy human donors was measured. The human HSP60 concentration of detected samples was determined to be 0.28 ng/mL with a range of 0.06 - 0.53 ng/mL



The mean TMEM66 concentration was determined to be 813.56 ng/mL in HepG2 cell extract based on a 1.1 mg/mL extract load and 425.61 ng/mL in MCF-7 cell extract based on a 1.2 mg/mL extract load.