

For Research Use Only

UMP/CMP kinase Recombinant Matched Antibody Pair, PBS Only



Catalog Number:MP02460-1

Capture Antibody Information

Catalog Number:
86475-2-PBS
Host:
Rabbit
Isotype:
IgG
Purification Method:
Protein A purification

Clone ID:
251233H8
Reactivity:
human
Immunogen Catalog Number:
Ag1920

Conjugate:
Unconjugated
Full name:
cytidine monophosphate (UMP-CMP) kinase 1, cytosolic
Gene ID:
51727

Detection Antibody Information

Catalog Number:
86475-1-PBS
Host:
Rabbit
Isotype:
IgG
Purification Method:
Protein A purification

Clone ID:
251233D3
Reactivity:
human
GenBank:
BC014961
Immunogen Catalog Number:
Ag1920

Conjugate:
Unconjugated
Full name:
cytidine monophosphate (UMP-CMP) kinase 1, cytosolic
Gene ID:
51727

Applications

Tested Applications:
Cytometric bead array, Sandwich ELISA

Range:
0.781-100 ng/mL (Cytometric Bead Array)
39.1-2500 pg/mL (Sandwich ELISA)

Recommended Dilutions:
It is recommended that this reagent should be titrated in each testing system to obtain optimal results.

Product Information

MP02460-1 targets UMP/CMP kinase in immunoassays as a matched antibody pair. Validated in Cytometric bead array, Sandwich ELISA.

Capture antibody: CMPK1 Recombinant monoclonal antibody, PBS Only (Capture) 86475-2-PBS (251233H8). 100 µg. Concentration 1 mg/mL.

Detection antibody: UMP/CMP kinase Recombinant monoclonal antibody, PBS Only (Detector) 86475-1-PBS (251233D3). 100 µg. Concentration 1 mg/mL.

Unconjugated rabbit recombinant monoclonal antibody pair in PBS only storage buffer at a concentration of 1 mg/mL, ready for conjugation. Created using Proteintech's proprietary in-house recombinant technology. Recombinant production enables unrivalled batch-to-batch consistency, easy scale-up, and future security of supply.

Matched antibody pairs are designed for use in a variety of assays and platforms that require matched antibody pairs.

Antibody use should be optimized for each application and assay.

Storage

Storage:
Store at -80°C.
Storage buffer:
PBS only

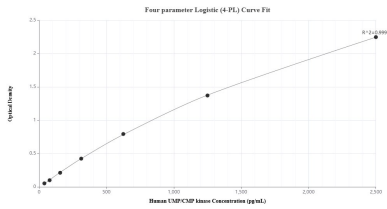
For technical support and original validation data for this product please contact:

T: 1 (888) 4PTGLAB (1-888-478-4522) (toll free in USA), or 1(312) 455-8498 (outside USA)

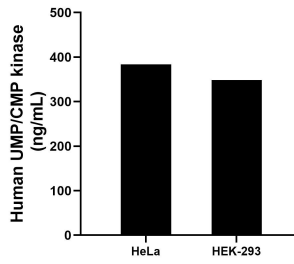
E: proteintech@ptglab.com
W: ptglab.com

This product is exclusively available under Proteintech Group brand and is not available to purchase from any other manufacturer.

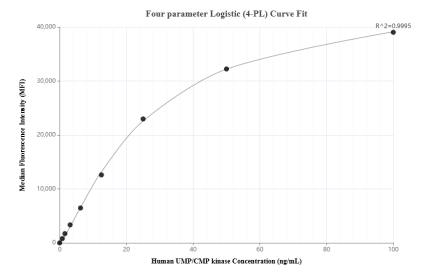
Selected Validation Data



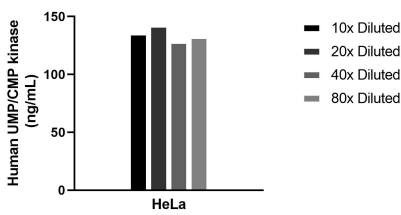
Sandwich ELISA standard curve of MP02460-1, Human UMP/CMP kinase Recombinant Matched Antibody Pair - PBS only. 86475-2-PBS was coated to a plate as the capture antibody and incubated with serial dilutions of standard Ag1920. 86475-1-PBS was HRP conjugated as the detection antibody. Range: 39.1-2500 pg/mL



The mean UMP/CMP kinase concentration was determined to be 383.79 ng/mL in HeLa cell extract based on a 1.2 mg/mL extract load and 348.74 ng/mL in HEK-293 cell extract based on a 1.2 mg/mL extract load.



Cytometric bead array standard curve of MP02460-1, UMP/CMP kinase Recombinant Matched Antibody Pair, PBS Only. Capture antibody: 86475-2-PBS. Detection antibody: 86475-1-PBS. Standard: Ag1920. Range: 0.781-100 ng/mL



The mean UMP/CMP kinase concentration was determined to be 134.2 ng/mL in HeLa cell extract based on a 1.2 mg/mL extract load.