

# Mouse FSTL1 Recombinant Matched Antibody Pair, PBS Only

Catalog Number: **MP02461-1**

## Capture Antibody Information

Catalog Number:

86444-1-PBS

Host:

Rabbit

Isotype:

IgG

Purification Method:

Protein A purification

Clone ID:

251240E12

Reactivity:

mouse

Immunogen Catalog Number:

Eg2859

Conjugate:

Unconjugated

Full name:

follicle-stimulating-like 1

Gene ID:

14314

## Detection Antibody Information

Catalog Number:

86444-2-PBS

Host:

Rabbit

Isotype:

IgG

Purification Method:

Protein A purification

Clone ID:

251240E6

Reactivity:

mouse

GenBank:

NM\_008047.5

Immunogen Catalog Number:

Eg2859

Conjugate:

Unconjugated

Full name:

follicle-stimulating-like 1

Gene ID:

14314

## Applications

Tested Applications:

Cytometric bead array

Range:

1.562-200 ng/mL (Cytometric Bead Array)

Recommended Dilutions:

It is recommended that this reagent should be titrated in each testing system to obtain optimal results.

## Product Information

MP02461-1 targets FSTL1 in immunoassays as a matched antibody pair. Validated in Cytometric bead array.

Capture antibody: Mouse Fstl1 Recombinant antibody, PBS Only (Capture) 86444-1-PBS (251240E12). 100 µg. Concentration 1 mg/mL.

Detection antibody: Mouse Fstl1 Recombinant antibody, PBS Only (Detector) 86444-2-PBS (251240E6). 100 µg. Concentration 1 mg/mL.

Unconjugated rabbit recombinant monoclonal antibody pair in PBS only storage buffer at a concentration of 1 mg/mL, ready for conjugation. Created using Proteintech's proprietary in-house recombinant technology. Recombinant production enables unrivalled batch-to-batch consistency, easy scale-up, and future security of supply.

Matched antibody pairs are designed for use in a variety of assays and platforms that require matched antibody pairs.

Antibody use should be optimized for each application and assay.

## Storage

Storage:

Store at -80°C.

Storage buffer:

PBS only

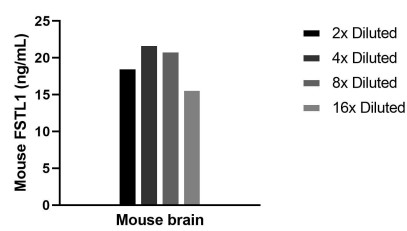
For technical support and original validation data for this product please contact:

T: 1 (888) 4PTGLAB (1-888-478-4522) (toll free in USA), or 1(312) 455-8498 (outside USA)

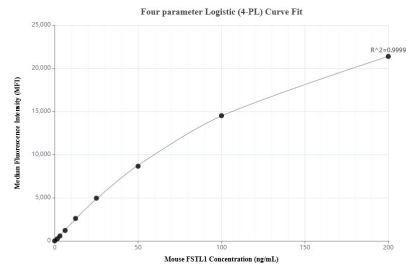
E: [proteintech@ptglab.com](mailto:proteintech@ptglab.com)  
W: [ptglab.com](http://ptglab.com)

**This product is exclusively available under Proteintech Group brand and is not available to purchase from any other manufacturer.**

## Selected Validation Data



The mean FSTL1 concentration was determined to be 19.3 ng/mL in Mouse brain tissue extract based on a 7.0 mg/mL extract load.



Cytometric bead array standard curve of MP02461-1, MOUSE FSTL1 Recombinant Matched Antibody Pair, PBS Only. Capture antibody: 86444-1-PBS. Detection antibody: 86444-2-PBS. Standard: Eg2859. Range: 1.562-200 ng/mL.