

For Research Use Only

# CCL14 Recombinant Matched Antibody Pair, PBS Only



Catalog Number:MP02465-1

## Capture Antibody Information

Catalog Number:  
86478-2-PBS

Host:  
Rabbit

Isotype:  
IgG

Purification Method:  
Protein A purification

Clone ID:  
250487C7

Reactivity:  
human

Immunogen Catalog Number:  
Eg2879

Conjugate:  
Unconjugated

Full name:  
chemokine (C-C motif) ligand 14

Gene ID:  
6358

## Detection Antibody Information

Catalog Number:  
86478-1-PBS

Host:  
Rabbit

Isotype:  
IgG

Purification Method:  
Protein A purification

Clone ID:  
250487D5

Reactivity:  
human

GenBank:  
NM\_032963.3

Immunogen Catalog Number:  
Eg2879

Conjugate:  
Unconjugated

Full name:  
chemokine (C-C motif) ligand 14

Gene ID:  
6358

## Applications

Tested Applications:  
Cytometric bead array, Sandwich ELISA

Range:  
0.312-20 ng/mL (Cytometric Bead Array)  
19.5-1250 pg/mL (Sandwich ELISA)

Recommended Dilutions:  
It is recommended that this reagent should be titrated in each testing system to obtain optimal results.

## Product Information

MP02465-1 targets CCL14 in immunoassays as a matched antibody pair. Validated in Cytometric bead array, Sandwich ELISA.

Capture antibody: CCL14 Recombinant antibody, PBS Only (Capture) 86478-2-PBS (250487C7). 100 µg. Concentration 1 mg/mL.

Detection antibody: CCL14 Recombinant antibody, PBS Only (Detector) 86478-1-PBS (250487D5). 100 µg. Concentration 1 mg/mL.

Unconjugated rabbit recombinant monoclonal antibody pair in PBS only storage buffer at a concentration of 1 mg/mL, ready for conjugation. Created using Proteintech's proprietary in-house recombinant technology. Recombinant production enables unrivalled batch-to-batch consistency, easy scale-up, and future security of supply.

Matched antibody pairs are designed for use in a variety of assays and platforms that require matched antibody pairs.

Antibody use should be optimized for each application and assay.

## Storage

Storage:  
Store at -80°C.  
Storage buffer:  
PBS only

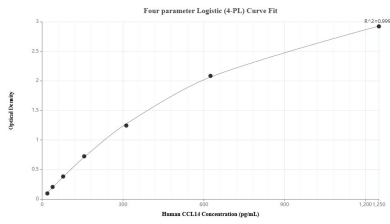
For technical support and original validation data for this product please contact:

T: 1 (888) 4PTGLAB (1-888-478-4522) (toll free in USA), or 1(312) 455-8498 (outside USA)

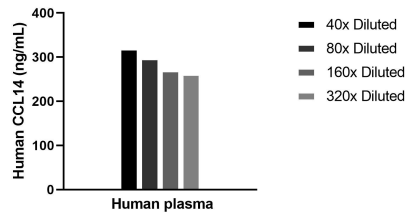
E: [proteintech@ptglab.com](mailto:proteintech@ptglab.com)  
W: [ptglab.com](http://ptglab.com)

This product is exclusively available under Proteintech Group brand and is not available to purchase from any other manufacturer.

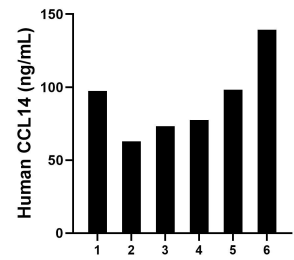
## Selected Validation Data



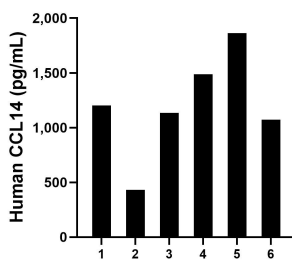
Sandwich ELISA standard curve of MP02465-1, Human CCL14 Recombinant Matched Antibody Pair - PBS only. 86478-2-PBS was coated to a plate as the capture antibody and incubated with serial dilutions of standard Eg2879. 86478-1-PBS was HRP conjugated as the detection antibody. Range: 19.5-1250 pg/mL



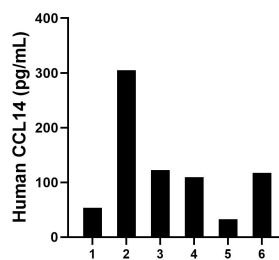
The mean CCL14 concentration was determined to be 286.7 ng/mL in human plasma.



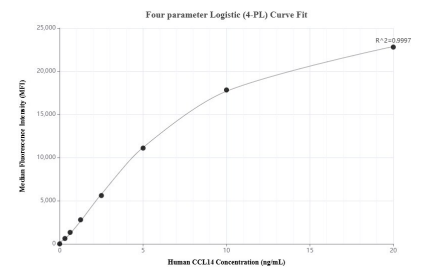
Plasma of six individual healthy human donors was measured. The human CCL14 concentration of detected samples was determined to be 91.45 ng/mL with a range of 62.87-139.32 ng/mL.



Saliva of six individual healthy human donors was measured. The human CCL14 concentration of detected samples was determined to be 1,198.7 pg/mL with a range of 431.7-1,862.1 pg/mL



Urine of six individual healthy human donors was measured. The human CCL14 concentration of detected samples was determined to be 123.44 pg/mL with a range of 32.9-304.6 pg/mL



Cytometric bead array standard curve of MP02465-1, CCL14 Recombinant Matched Antibody Pair, PBS Only. Capture antibody: 86478-2-PBS. Detection antibody: 86478-1-PBS. Standard: Eg2879. Range: 0.312-20 ng/mL.